

MODULAR 500 EAST BRITTON ROAD
SERVICES COMPANY OKLAHOMA CITY, OK. 73114

REVISED

NICU BAY CASEWORK
 TYPE A

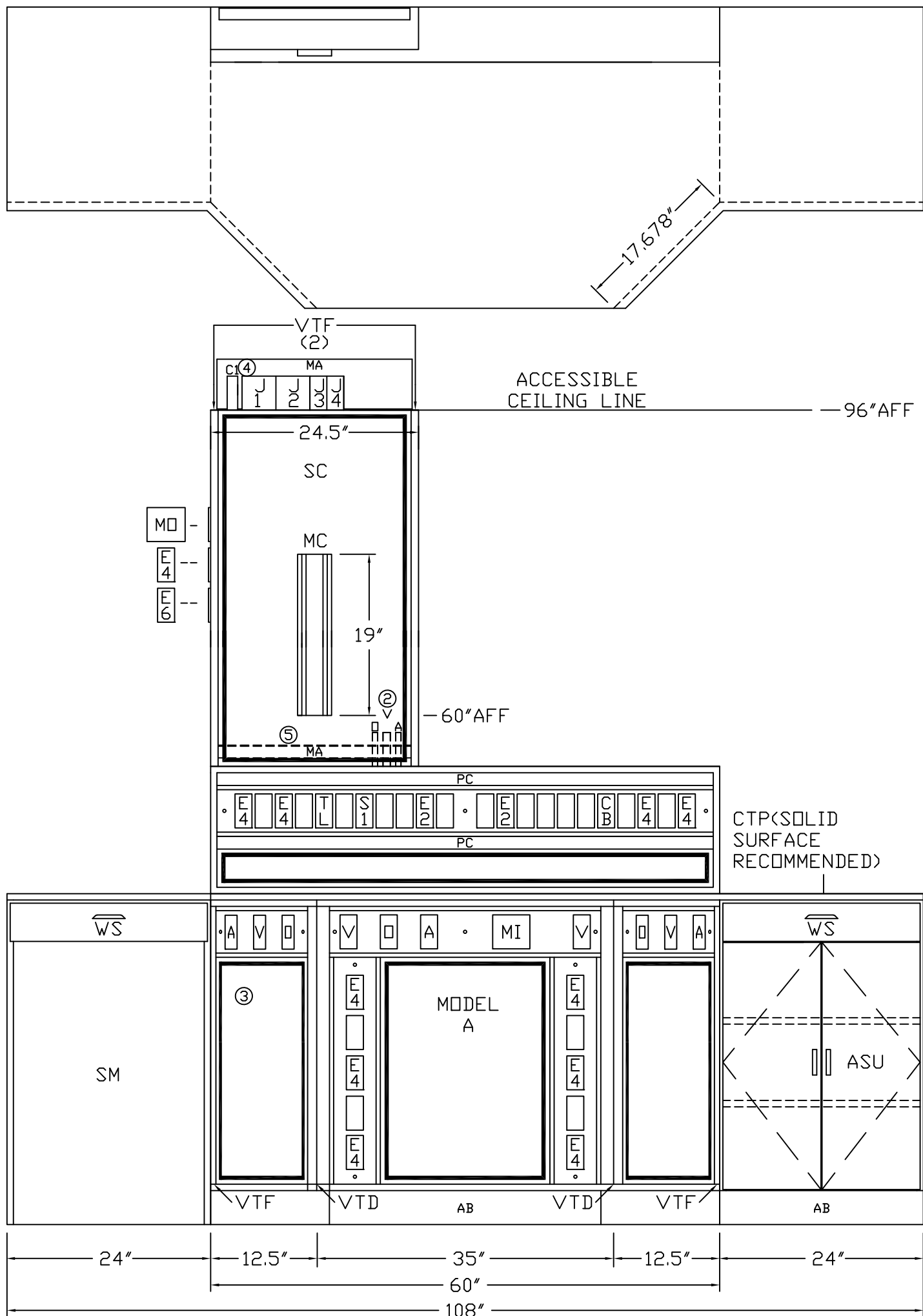
PROJECT

SCALE: =1'

DATE _____ DRAWN BY _____ DRAWING #
 PB-160

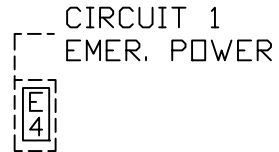
NOTES:

- ① JUNCTION BOXES: J1--NORMAL POWER, J2--EMERGENCY POWER, J3--CODE BLUE, J4--TELEPHONE.
- ② GAS PIPING: TYPE L COPPERTUBING. OXYGEN AND AIR--1/2" I.D., VACUUM--3/4" I.D.
- ③ PANEL LAMINATE COLOR: VERTICAL SURFACES TO BE DETERMINED. HORIZONTAL SURFACES TO BE DETERMINED.
- ④ CONDUIT: C1--MONITOR (1-1/4").
- ⑤ SERVICES FROM THE LOWER SECTION WILL BE TERMINATED IN THIS AREA AND WILL REQUIRE FIELD ROUTING DURING INSTALLATION.



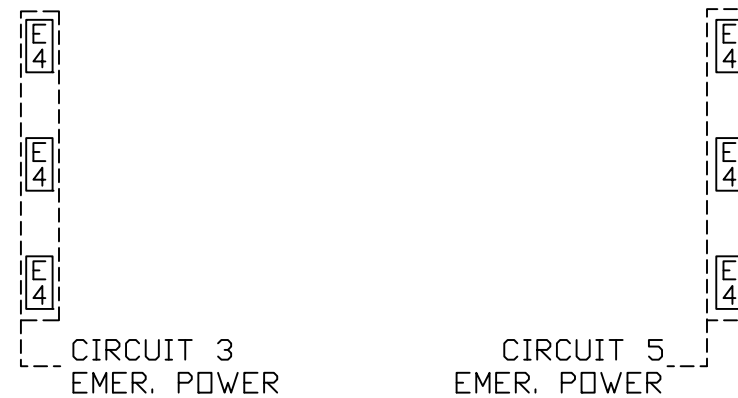
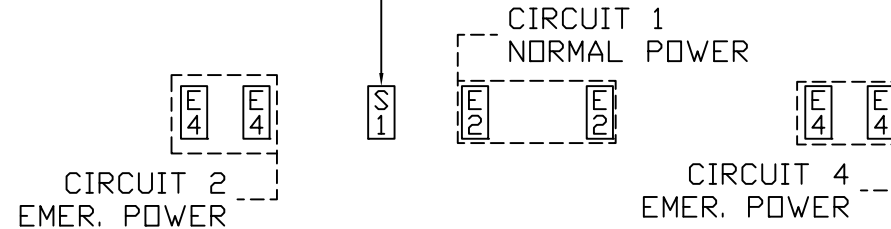
120V, 20A NORMAL POWER ONE CIRCUIT
 120V, 20A EMERGENCY POWER FIVE CIRCUITS

GROUND BUS — J1 — GROUND BUS — J2



HIGH ACUITY
 --- REQ'D --- AS SHOWN
 --- OPPOSITE

CONTROLS FUNCTIONS OF A REMOTE LIGHT H & SL TO J1



WIRING DIAGRAM

GROUND WIRING TO BE #10 GREEN STRANDED COPPER.

