

NOTES:

- ① GAS OUTLETS TO BE MSC STANDARD BRAND WITH CONNECTION TO MATCH EXISTING HOSPITAL EQUIPMENT.
- ② DEVICE MOUNTING PANELS: 3D LAMINATE SELECTION TO BE DETERMINED. WOOD GRAIN TO BE IN A VERTICAL ORIENTATION.
- ③ HORIZONTAL CHANNELS TO BE ANODIZED ALUMINUM AND DEVICE COVER PLATES TO BE STAINLESS STEEL.
- ④ FORM UNIT IS SEMI-RECESSED MOUNTED
- ⑤ OUTER SECTIONS AVAILABLE IN 18", 24", 32", OR 36" MODULE WIDTHS. ACTUAL PANEL WIDTH WILL BE THE MODULE WIDTH + 3/4"
- ⑥ CENTER SECTION AVAILABLE IN 36", 42", OR 48" WIDTH.



MODULAR SERVICES COMPANY 500 EAST BRITTON ROAD
OKLAHOMA CITY, OK 73114

REVISED

FORM®
SEMI-RECESSED SYSTEM
7500 SERIES

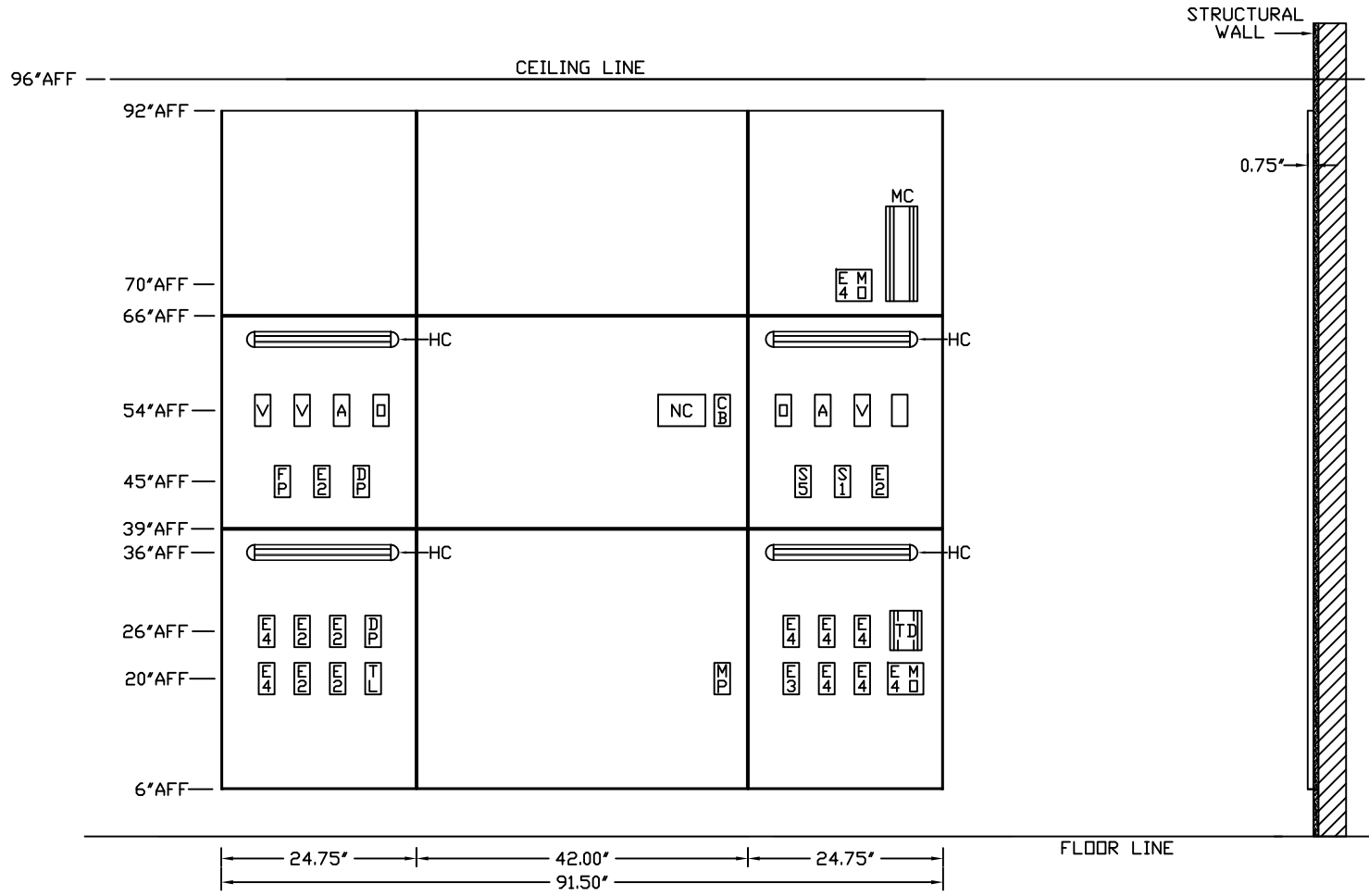
SCALE: = 1'

DATE _____ DRAWN BY _____ DRAWING #
PB-200R

PROJECT

NOT FOR CONSTRUCTION
CONCEPTUAL ONLY

LEGEND		
REQ	SYM	DESCRIPTION
2	□	OXYGEN OUTLET
2	A	AIR OUTLET
3	V	VACUUM OUTLET
6	E2	DUPLEX RECEPTACLE, 8300 IVORY, 20A, 125V, H.G., NORMAL POWER
1	E3	SINGLE RECEPTACLE, 8310 RED, 20A, 125V, H.G., EMER. POWER
9	E4	DUPLEX RECEPTACLE, 8300 RED, 20A, 125V, H.G., EMER. POWER
1	S1	LIGHT SWITCH, 1P, 15A, 125/277V, IVORY TOGGLE HANDLE
1	S5	MOMENTARY CONTACT SWITCH, 1P, 15A 120V, 3-POS, CENTER OFF, IVORY
1	NC	NURSE CALL PROVISION
1	CB	CODE BLUE PROVISION
2	DP	DATA OUTLET PROVISION SINGLE CAT 5, RJ-45 RECEPTACLE
1	TL	TELEPHONE OUTLET PROVISION SINGLE CAT 5, RJ-45 RECEPTACLE
1	MP	MULTI-PIN BED RECEPT. PROVISION
2	MD	MONITOR OUTPUT PROVISION
1	FP	FUTURE PROVISION
1	MC	MONITOR CHANNEL ONLY
1	TD	TOUCHDOWN CHARTING STATION
4	HC	HORIZONTAL ACCESSORY CHANNEL



NOTES:

- ① GAS OUTLETS TO BE MSC STANDARD BRAND WITH CONNECTION TO MATCH EXISTING HOSPITAL EQUIPMENT.
- ② DEVICE MOUNTING PANELS: 3D LAMINATE SELECTION TO BE DETERMINED. WOOD GRAIN TO BE IN A VERTICAL ORIENTATION.
- ③ HORIZONTAL CHANNELS TO BE ANODIZED ALUMINUM AND DEVICE COVER PLATES TO BE STAINLESS STEEL.
- ④ FORM UNIT IS SEMI-RECESSED MOUNTED
- ⑤ OUTER SECTIONS AVAILABLE IN 18", 24", 32", OR 36" MODULE WIDTHS. ACTUAL PANEL WIDTH WILL BE THE MODULE WIDTH + 3/4"
- ⑥ CENTER SECTION AVAILABLE IN 36", 42", OR 48" WIDTH.



MODULAR 500 EAST BRITTON ROAD
SERVICES COMPANY OKLAHOMA CITY, OK 73114

REVISED

FORM®
 SEMI-RECESSED SYSTEM
 7500 SERIES

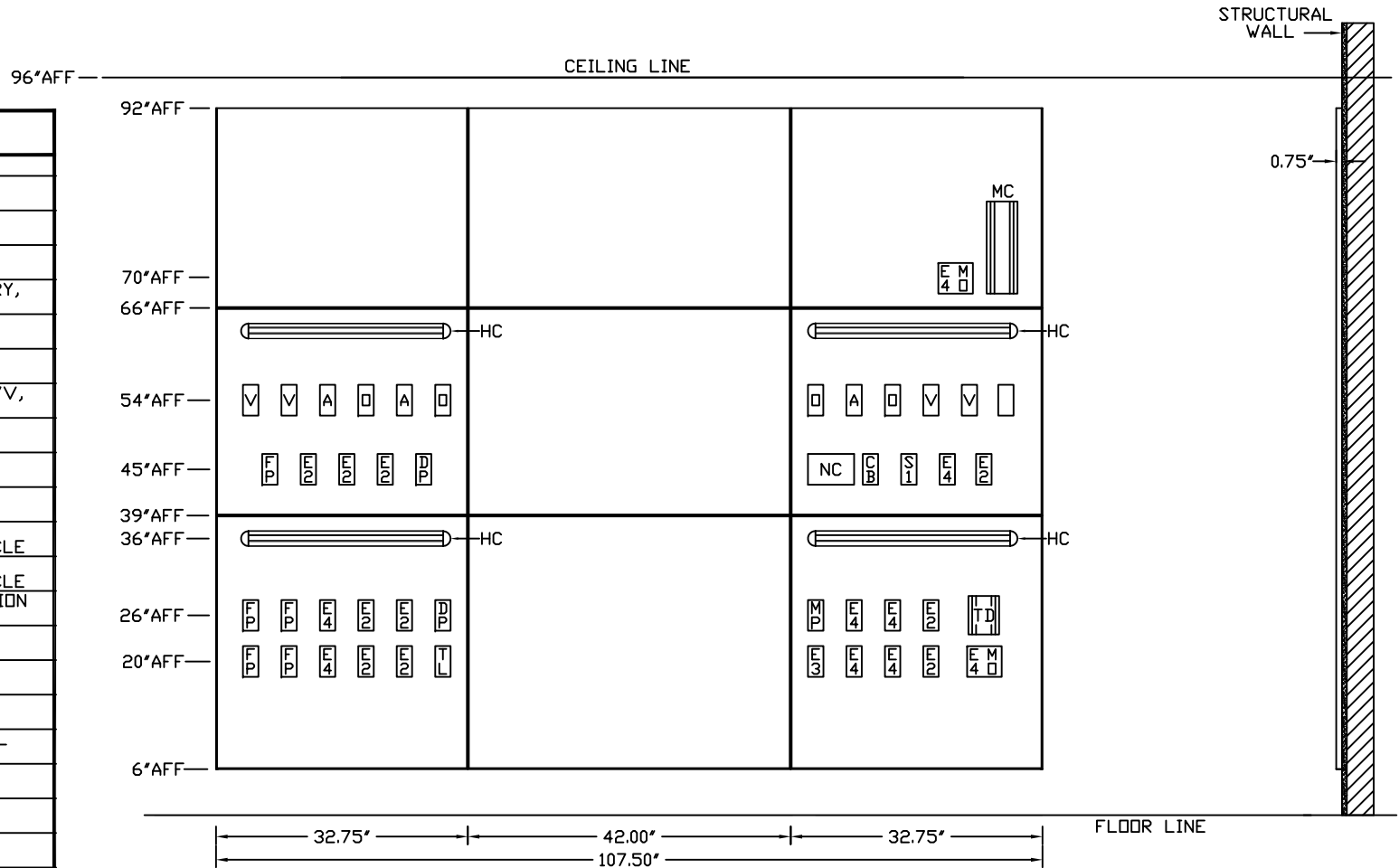
SCALE: = 1'

DATE _____ DRAWN BY _____ DRAWING #
 PB-202R

PROJECT

NOT FOR CONSTRUCTION
 CONCEPTUAL ONLY

LEGEND		
REQ	SYM	DESCRIPTION
4	□	OXYGEN OUTLET
3	A	AIR OUTLET
4	V	VACUUM OUTLET
10	E2	DUPLEX RECEPTACLE, 8300 IVORY, 20A, 125V, H.G., NORMAL POWER
1	E3	SINGLE RECEPTACLE, 8310 RED, 20A, 125V, H.G., EMER. POWER
9	E4	DUPLEX RECEPTACLE, 8300 RED, 20A, 125V, H.G., EMER. POWER
1	S1	LIGHT SWITCH, 1P, 15A, 125/277V, IVORY TOGGLE HANDLE
5	FP	FUTURE PROVISION
1	NC	NURSE CALL PROVISION
1	CB	CODE BLUE PROVISION
2	DP	DATA OUTLET PROVISION SINGLE CAT 5, RJ-45 RECEPTACLE
1	TL	TELEPHONE OUTLET PROVISION SINGLE CAT 5, RJ-45 RECEPTACLE
1	MP	MULTI-PIN BED RECEPT. PROVISION
2	MO	MONITOR OUTPUT PROVISION
1	MC	MONITOR CHANNEL ONLY
1	TD	TOUCHDOWN CHARTING STATION
4	HC	HORIZONTAL ACCESSORY CHANNEL



NOTES:

- ① GAS OUTLETS TO BE MSC STANDARD BRAND WITH CONNECTION TO MATCH EXISTING HOSPITAL EQUIPMENT.
- ② DEVICE MOUNTING PANELS: 3D LAMINATE SELECTION TO BE DETERMINED. WOOD GRAIN TO BE IN A VERTICAL ORIENTATION.
- ③ HORIZONTAL CHANNELS TO BE ANODIZED ALUMINUM AND DEVICE COVER PLATES TO BE STAINLESS STEEL.
- ④ FORM UNIT IS SEMI-RECESSED MOUNTED
- ⑤ OUTER SECTIONS AVAILABLE IN 18", 24", 32", OR 36" MODULE WIDTHS. ACTUAL PANEL WIDTH WILL BE THE MODULE WIDTH + 3/4"
- ⑥ CENTER SECTION AVAILABLE IN 36", 42", OR 48" WIDTH.



MODULAR SERVICES COMPANY 500 EAST BRITTON ROAD
OKLAHOMA CITY, OK 73114

REVISED

FORM®
SEMI-RECESSED SYSTEM
7500 SERIES

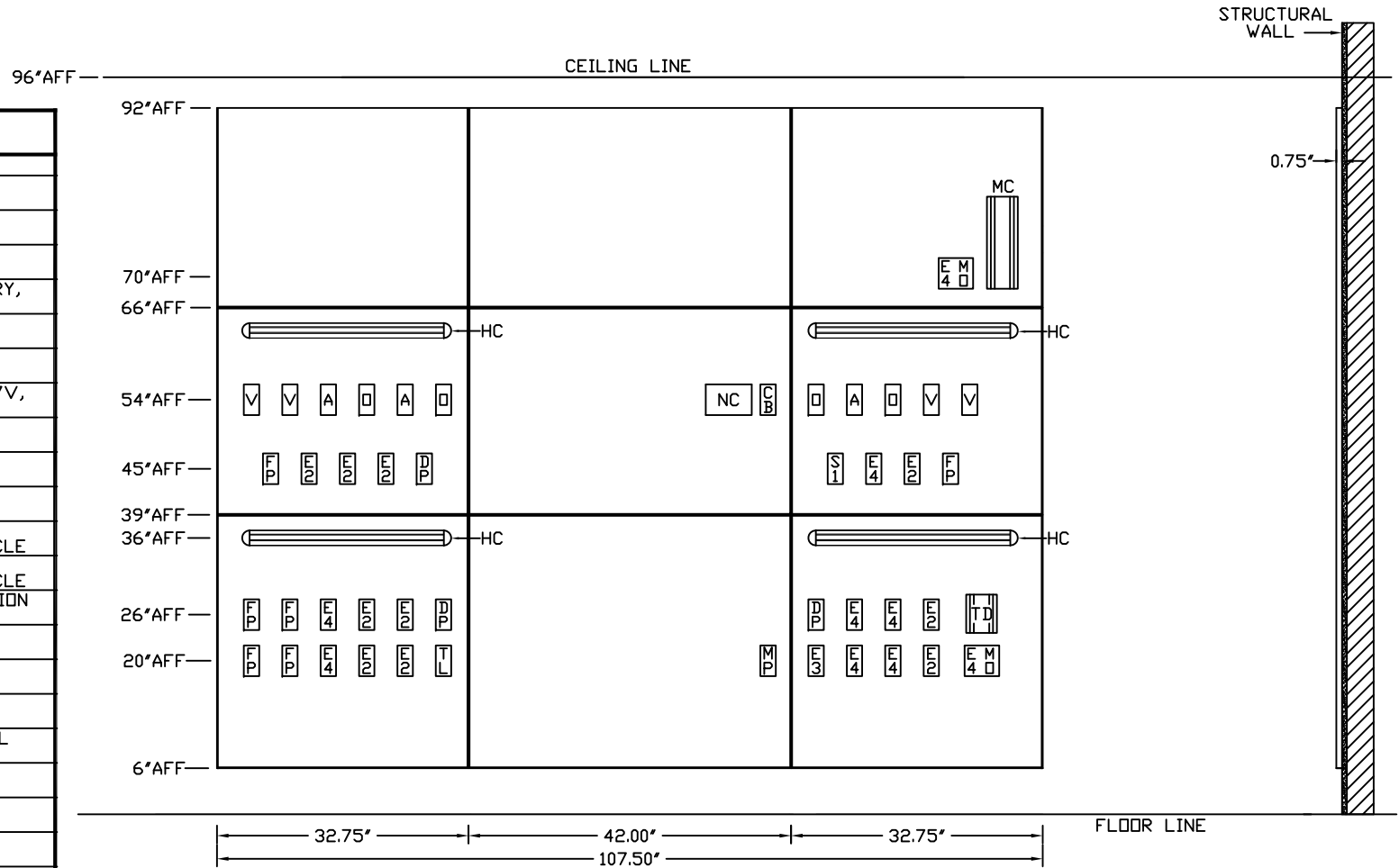
SCALE: = 1'

DATE: _____ DRAWN BY: _____ DRAWING #
PB-203R

PROJECT

NOT FOR CONSTRUCTION
CONCEPTUAL ONLY

LEGEND		
REQ	SYM	DESCRIPTION
4	□	OXYGEN OUTLET
3	A	AIR OUTLET
4	V	VACUUM OUTLET
10	E2	DUPLEX RECEPTACLE, 8300 IVORY, 20A, 125V, H.G., NORMAL POWER
1	E3	SINGLE RECEPTACLE, 8310 RED, 20A, 125V, H.G., EMER. POWER
9	E4	DUPLEX RECEPTACLE, 8300 RED, 20A, 125V, H.G., EMER. POWER
1	S1	LIGHT SWITCH, IP, 15A, 125/277V, IVORY TOGGLE HANDLE
6	FP	FUTURE PROVISION
1	NC	NURSE CALL PROVISION
1	CB	CODE BLUE PROVISION
3	DP	DATA OUTLET PROVISION SINGLE CAT 5, RJ-45 RECEPTACLE
1	TL	TELEPHONE OUTLET PROVISION SINGLE CAT 5, RJ-45 RECEPTACLE
1	MP	MULTI-PIN BED RECEPT. PROVISION
2	MD	MONITOR OUTPUT PROVISION
1	MC	MONITOR CHANNEL ONLY
1	TD	TOUCHDOWN CHARTING STATION
4	HC	HORIZONTAL ACCESSORY CHANNEL



NOTES:

- ① GAS OUTLETS TO BE MSC STANDARD BRAND WITH CONNECTION TO MATCH EXISTING HOSPITAL EQUIPMENT.
- ② DEVICE MOUNTING PANELS: 3D LAMINATE SELECTION TO BE DETERMINED. WOOD GRAIN TO BE IN A VERTICAL ORIENTATION.
- ③ HORIZONTAL CHANNELS TO BE ANODIZED ALUMINUM AND DEVICE COVER PLATES TO BE STAINLESS STEEL.
- ④ FORM UNIT IS SEMI-RECESSED MOUNTED
- ⑤ OUTER SECTIONS AVAILABLE IN 18", 24", 32", OR 36" MODULE WIDTHS. ACTUAL PANEL WIDTH WILL BE THE MODULE WIDTH + 3/4"
- ⑥ CENTER SECTION AVAILABLE IN 36", 42", OR 48" WIDTH.



MODULAR 500 EAST BRITTON ROAD
SERVICES COMPANY OKLAHOMA CITY, OK 73114

REVISED

FORM®
 SEMI-RECESSED SYSTEM
 7500 SERIES

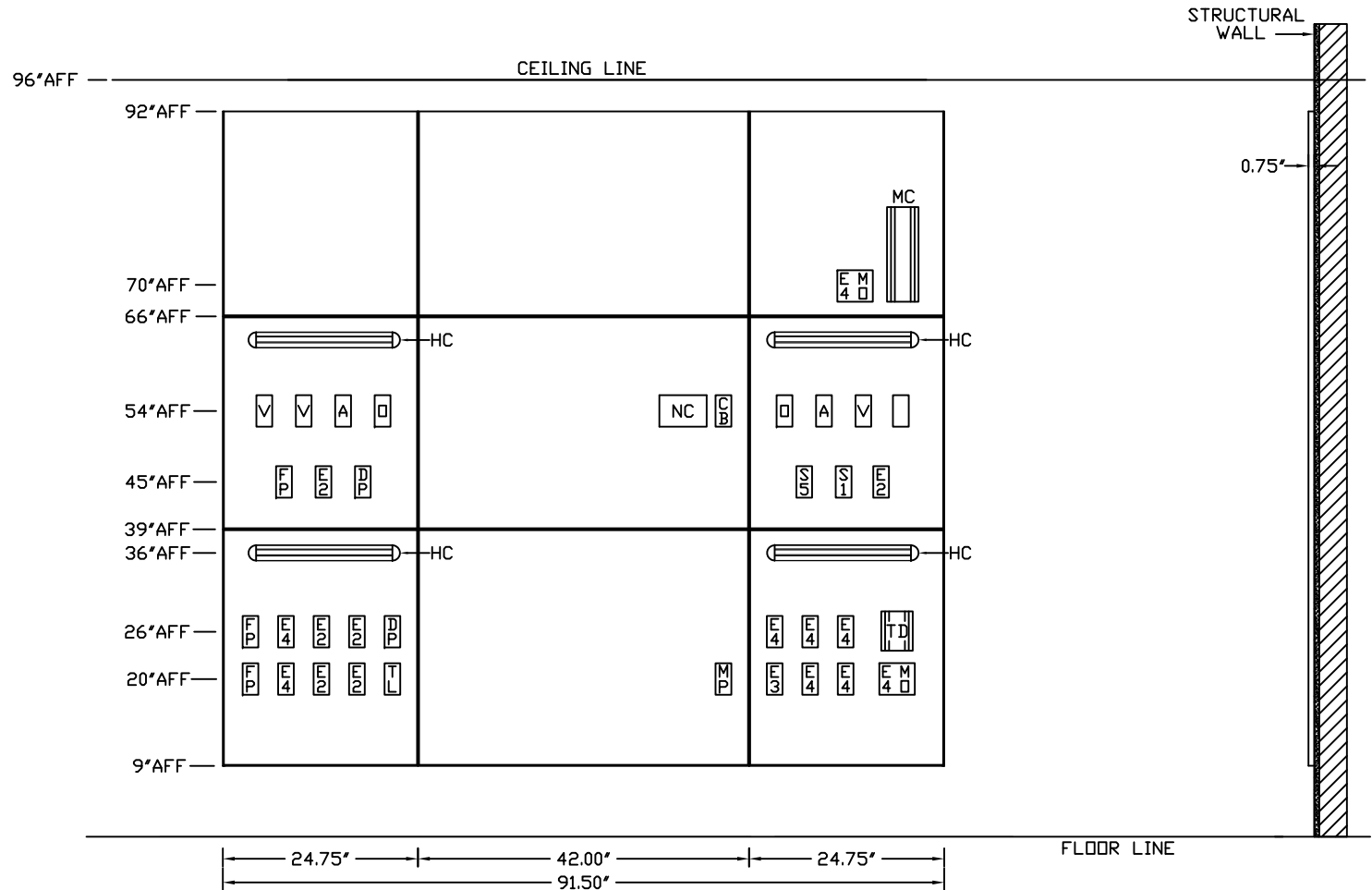
SCALE: = 1'

DATE _____ DRAWN BY _____ DRAWING #
 PB-204R

PROJECT

NOT FOR CONSTRUCTION
 CONCEPTUAL ONLY

LEGEND		
REQ	SYM	DESCRIPTION
2	□	OXYGEN OUTLET
2	A	AIR OUTLET
3	V	VACUUM OUTLET
6	E2	DUPLEX RECEPTACLE, 8300 IVORY, 20A, 125V, H.G., NORMAL POWER
1	E3	SINGLE RECEPTACLE, 8310 RED, 20A, 125V, H.G., EMER. POWER
9	E4	DUPLEX RECEPTACLE, 8300 RED, 20A, 125V, H.G., EMER. POWER
1	S1	LIGHT SWITCH, 1P, 15A, 125/277V, IVORY TOGGLE HANDLE
1	S5	MOMENTARY CONTACT SWITCH, 1P, 15A 120V, 3-POS, CENTER OFF, IVORY
1	NC	NURSE CALL PROVISION
1	CB	CODE BLUE PROVISION
2	DP	DATA OUTLET PROVISION SINGLE CAT 5, RJ-45 RECEPTACLE
1	TL	TELEPHONE OUTLET PROVISION SINGLE CAT 5, RJ-45 RECEPTACLE
1	MP	MULTI-PIN BED RECEPT. PROVISION
2	MD	MONITOR OUTPUT PROVISION
3	FP	FUTURE PROVISION
1	MC	MONITOR CHANNEL ONLY
1	TD	TOUCHDOWN CHARTING STATION
4	HC	HORIZONTAL ACCESSORY CHANNEL



NOTES:

- ① GAS OUTLETS TO BE MSC STANDARD BRAND WITH CONNECTION TO MATCH EXISTING HOSPITAL EQUIPMENT.
- ② DEVICE MOUNTING PANELS: 3D LAMINATE SELECTION TO BE DETERMINED. WOOD GRAIN TO BE IN A VERTICAL ORIENTATION.
- ③ HORIZONTAL CHANNELS TO BE ANODIZED ALUMINUM AND DEVICE COVER PLATES TO BE STAINLESS STEEL.
- ④ FORM UNIT IS SEMI-RECESSED MOUNTED
- ⑤ OUTER SECTIONS AVAILABLE IN 18", 24", 32", OR 36" MODULE WIDTHS. ACTUAL PANEL WIDTH WILL BE THE MODULE WIDTH + 3/4"
- ⑥ CENTER SECTION AVAILABLE IN 36", 42", OR 48" WIDTH.



MODULAR 500 EAST BRITTON ROAD
SERVICES COMPANY OKLAHOMA CITY, OK 73114

REVISED

FORM®
 SEMI-RECESSED SYSTEM
 7500 SERIES

SCALE: = 1'

DATE _____ DRAWN BY _____ DRAWING # PB-206R

PROJECT

NOT FOR CONSTRUCTION
 CONCEPTUAL ONLY

LEGEND		
REQ	SYM	DESCRIPTION
4	□	OXYGEN OUTLET
3	A	AIR OUTLET
4	V	VACUUM OUTLET
10	E2	DUPLEX RECEPTACLE, 8300 IVORY, 20A, 125V, H.G., NORMAL POWER
1	E3	SINGLE RECEPTACLE, 8310 RED, 20A, 125V, H.G., EMER. POWER
9	E4	DUPLEX RECEPTACLE, 8300 RED, 20A, 125V, H.G., EMER. POWER
1	S1	LIGHT SWITCH, 1P, 15A, 125/277V, IVORY TOGGLE HANDLE
5	FP	FUTURE PROVISION
1	NC	NURSE CALL PROVISION
1	CB	CODE BLUE PROVISION
2	DP	DATA OUTLET PROVISION SINGLE CAT 5, RJ-45 RECEPTACLE
1	TL	TELEPHONE OUTLET PROVISION SINGLE CAT 5, RJ-45 RECEPTACLE
1	MP	MULTI-PIN BED RECEPT. PROVISION
2	MO	MONITOR OUTPUT PROVISION
1	MC	MONITOR CHANNEL ONLY
1	TD	TOUCHDOWN CHARTING STATION
4	HC	HORIZONTAL ACCESSORY CHANNEL

