

NOTES:

- ① JUNCTION BOXES: J1--NORMAL POWER, J2--EMERGENCY POWER, J3--TELEPHONE.
- ② GAS PIPING: TYPE L COPPER TUBING. OXYGEN & AIR-- $\frac{1}{2}$ " I.D., VACUUM-- $\frac{3}{4}$ " I.D.
- ③ ALL POWDER COATED SURFACES WILL MATCH 'SURF' OR 'PLATINUM GREY'.
- ④ ALL INTERIOR STUD FRAMING IS TO FIT A $3\frac{5}{8}$ " METAL STUD WALL WITH A $\frac{5}{8}$ " GYPSUM BOARD FINISH.
- ⑤ EMT CONDUIT: C1--MONITOR OUTPUT ($1\frac{1}{4}$ ").
- ⑥ CEILING HEIGHT 7'6" MIN TO 9'6" MAX OTHER HEIGHTS ARE SUBJECT TO AN ADDITIONAL CHARGE. CONTACT YOUR SALES REPRESENTATIVE FOR DETAILS.

MODULAR SERVICES COMPANY 500 EAST BRITTON ROAD
OKLAHOMA CITY, OK. 73114

PROJECT

REVISED

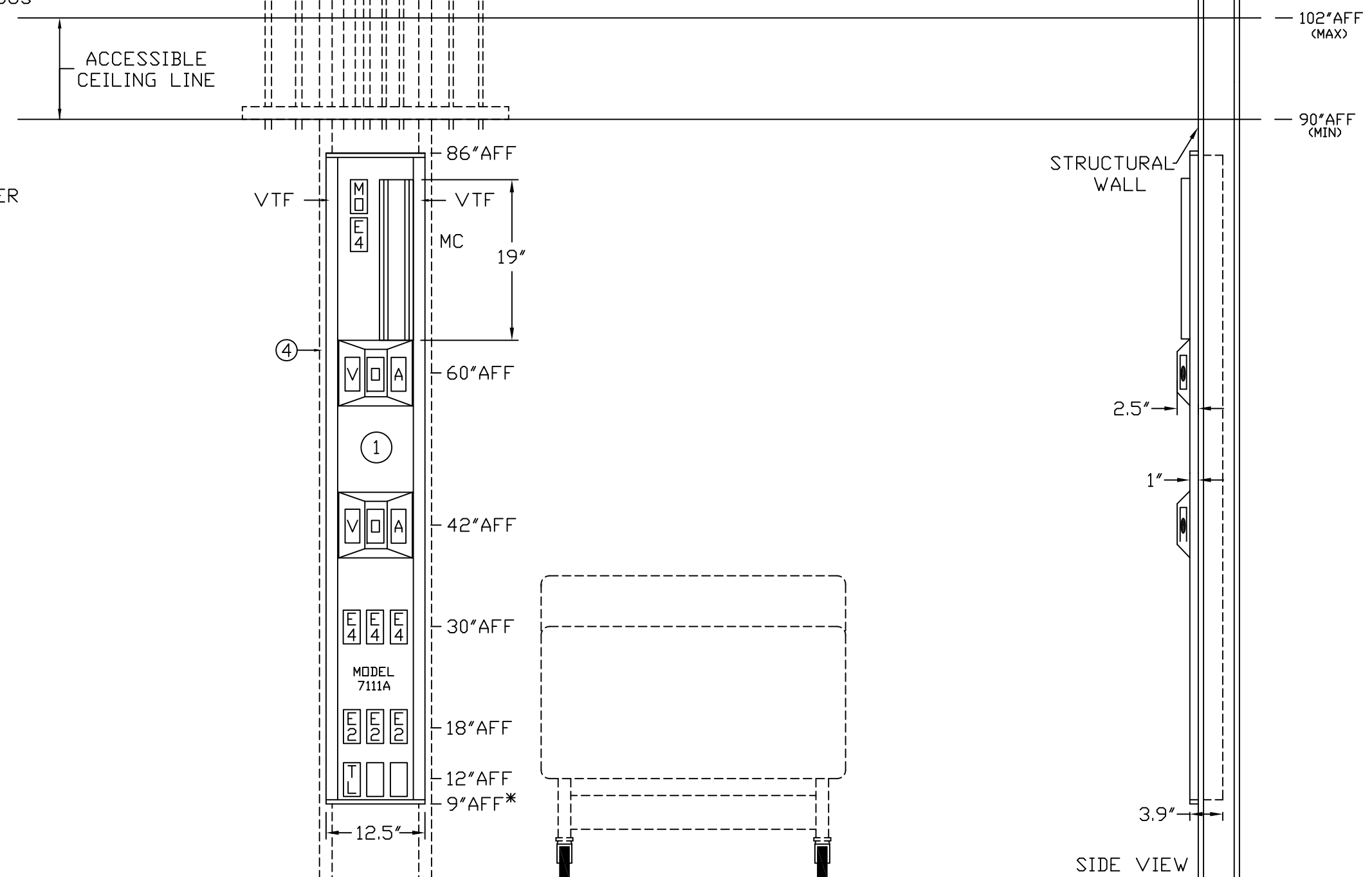
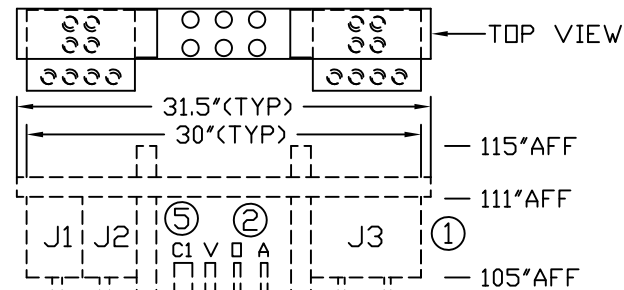
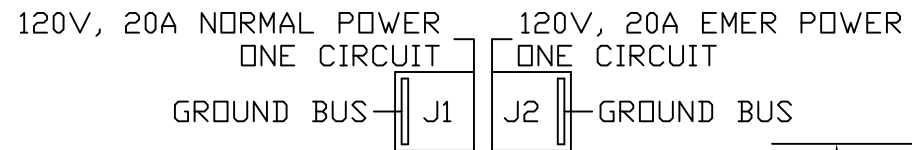
JUMBO PROFILE® UNIT
SINGLE SIDED, SEMI-RECESSED
DUAL GAS POD
MODEL 7111A

SCALE:  = 1'

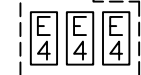
DATE _____ DRAWN BY _____ DRAWING #
PB-113

MEDIUM ACUITY

-- REQ'D: -- AS SHOWN
-- OPPOSITE



CIRCUIT 1
EMERGENCY POWER



CIRCUIT 1
NORMAL POWER

WIRING DIAGRAM
GROUND WIRING TO BE #10
GREEN STRANDED COPPER

*AFF (ABOVE FINISHED FLOOR)

FLOOR LINE

SIDE VIEW

