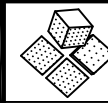


NOTES:

- ① JUNCTION BOXES: J1--NORMAL POWER, J2--EMERGENCY POWER, J3--NURSE CALL/TELEPHONE.
- ② GAS PIPING: TYPE L COPPER TUBING. OXYGEN & AIR-- $\frac{1}{2}$ " I.D., VACUUM-- $\frac{3}{4}$ " I.D.
- ③ ALL POWDER COATED SURFACES WILL MATCH 'SURF' OR 'PLATINUM GREY'.
- ④ ALL INTERIOR STUD FRAMING IS TO FIT A $3\frac{5}{8}$ " METAL STUD WALL WITH A $\frac{5}{8}$ " GYPSUM BOARD FINISH.
- ⑤ EMT CONDUIT: C1--MONITOR OUTPUT ($1\frac{1}{4}$ ").
- ⑥ CEILING HEIGHT 7'6" MIN TO 9'6" MAX. OTHER HEIGHTS ARE SUBJECT TO AN ADDITIONAL CHARGE. CONTACT YOUR SALES REPRESENTATIVE FOR DETAILS.



MODULAR SERVICES COMPANY 500 EAST BRITTON ROAD
OKLAHOMA CITY, OK. 73114

PROJECT

REVISED

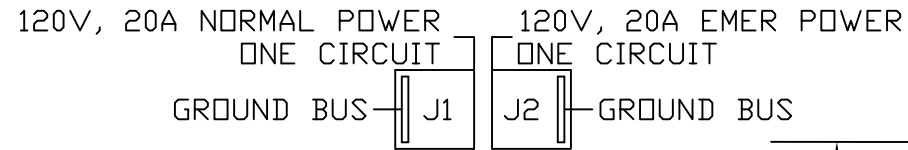
EXTENDED PROFILE® UNIT
SINGLE SIDED, SEMI-RECESSED
MODEL 7111

SCALE: = 1'

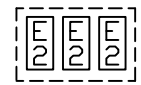
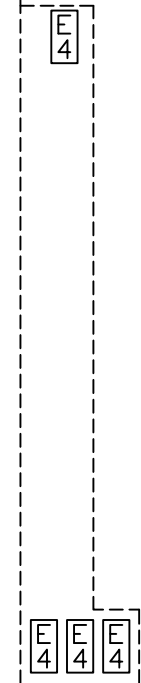
DATE _____ DRAWN BY _____ DRAWING #
PB-112

LOW ACUITY

-- REQ'D: -- AS SHOWN
-- OPPOSITE

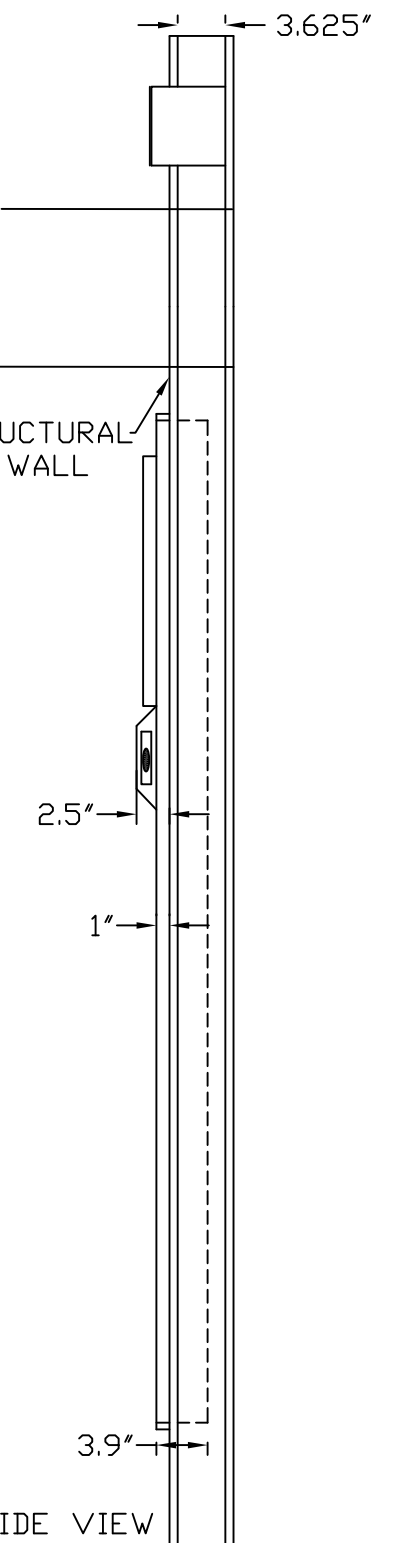
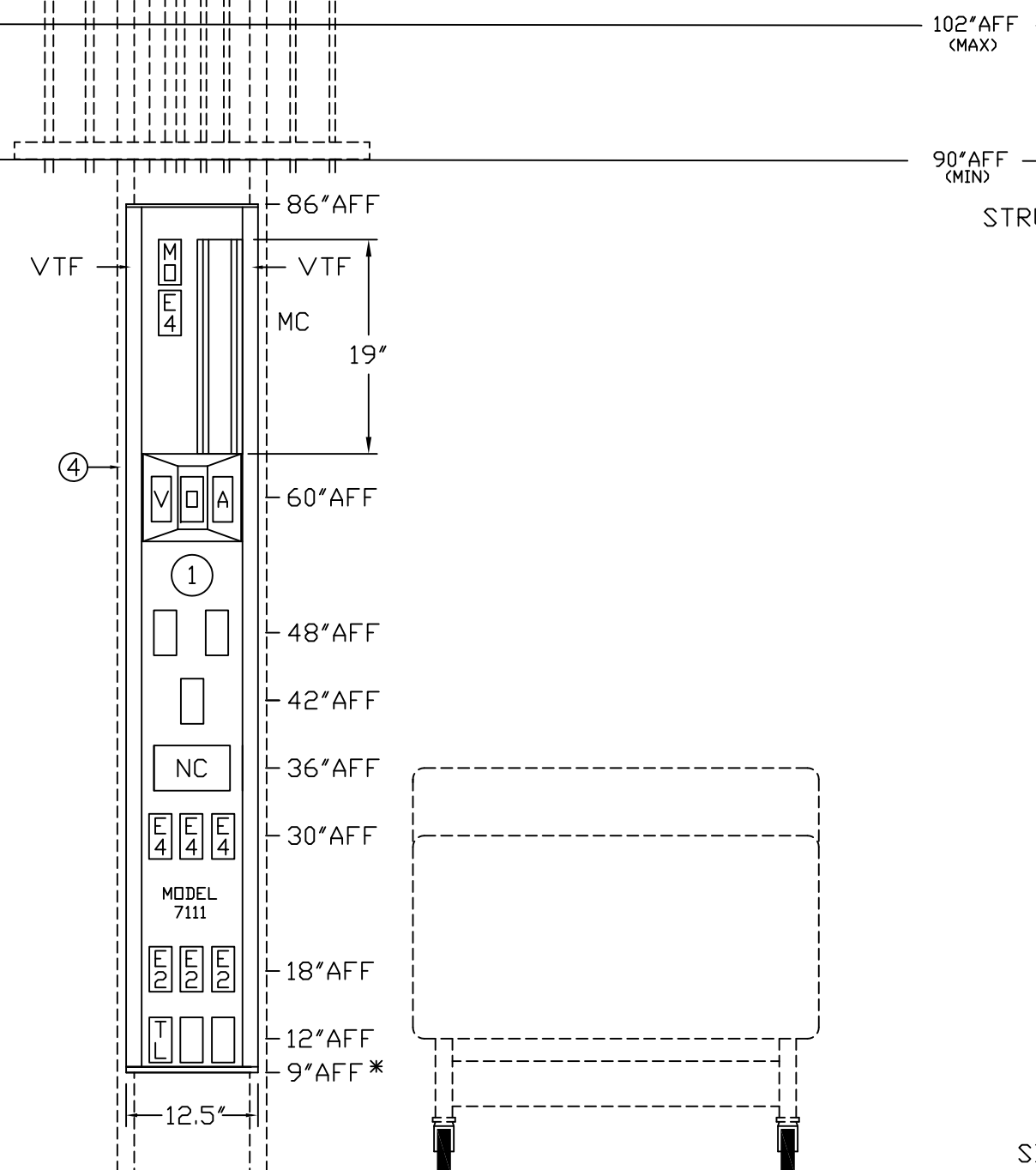
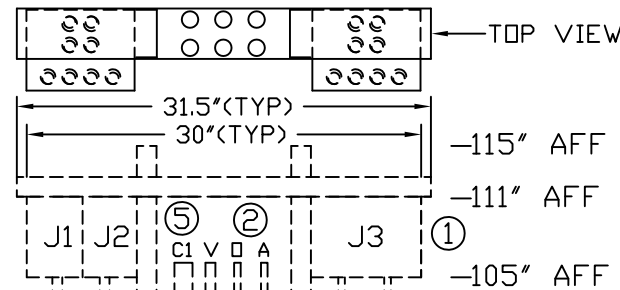


CIRCUIT 1
EMERGENCY POWER



CIRCUIT 1
NORMAL POWER

WIRING DIAGRAM
GROUND WIRING TO BE #10
GREEN STRANDED COPPER



FLOOR LINE

*AFF (ABOVE FINISHED FLOOR)

