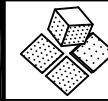


NOTES:

- ① JUNCTION BOXES: J1--NORMAL POWER, J2--EMER. POWER, J3--TELEPHONE.
- ② GAS PIPING: TYPE L COPPERTUBING. OXYGEN & AIR--1/2" I.D., VACUUM--3/4" I.D.
- ③ COLOR TO MATCH 'SURF' OR 'PLATINUM GREY'.
- ④ CEILING HEIGHT: 7'6" MIN TO 9'6" MAX. OTHER HEIGHTS ARE SUBJECT TO AN ADDTL CHARGE. CONTACT YOUR SALES REPRESENTATIVE FOR DETAILS.
- ⑤ MAXIMUM CONDUIT SIZE FOR DOUBLE-SIDED UNITS IS 3/4".



**MODULAR** 500 EAST BRITTON ROAD  
**SERVICES COMPANY** OKLAHOMA CITY, OK. 73114

PROJECT

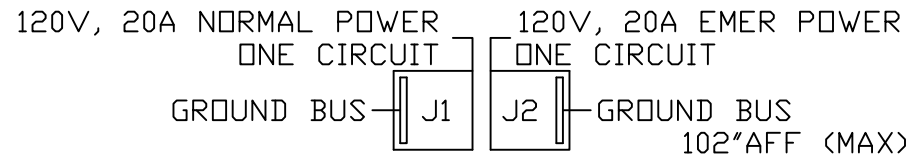
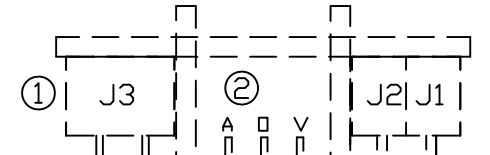
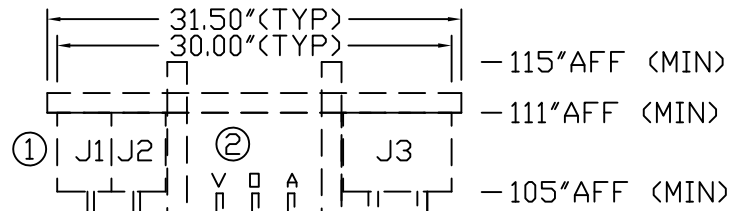
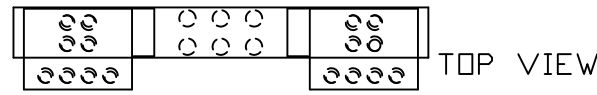
REVISED

DUAL PROFILE® UNIT  
 SINGLE SIDED, SEMI-RECESSED  
 MODEL 7012A

SCALE: =1'

DATE \_\_\_\_\_ DRAWN BY \_\_\_\_\_ DRAWING #  
 PB-111

SERVICES TO BE REVERSED  
 ON OPPOSITE HAND UNITS



ACCESSIBLE  
 CEILING LINE  
 90" AFF (MIN)

VTF

VTF 68.5" AFF

STRUCTURAL  
 WALL

3.625"

2.5"

1"

3.2"

SIDE VIEW

TYPICAL OF TWO SERVICES  
 TO BE REVERSED ON OPP.  
 HAND UNITS.

CIRCUIT 1  
 EMERGENCY POWER



CIRCUIT 1  
 NORMAL POWER

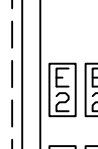
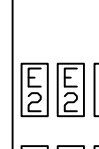
WIRING DIAGRAM  
 GROUND WIRING TO BE #10  
 GREEN STRANDED COPPER

FLOOR LINE

\* AFF (ABOVE FINISHED FLOOR)

MODEL  
 7012A

MODEL  
 7012A



12.5"

12.5"

60" AFF

42" AFF

30" AFF

18" AFF

12" AFF

9" AFF \*

