



MODULAR 500 EAST BRITTON ROAD
SERVICES COMPANY OKLAHOMA CITY, OK. 73114

REVISED

NEONATAL INTENSIVE
CARE UNIT
TYPE C

PROJECT

SCALE: = 1'

DATE _____ DRAWN BY _____ DRAWING #
PB-162

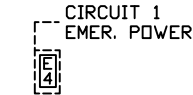
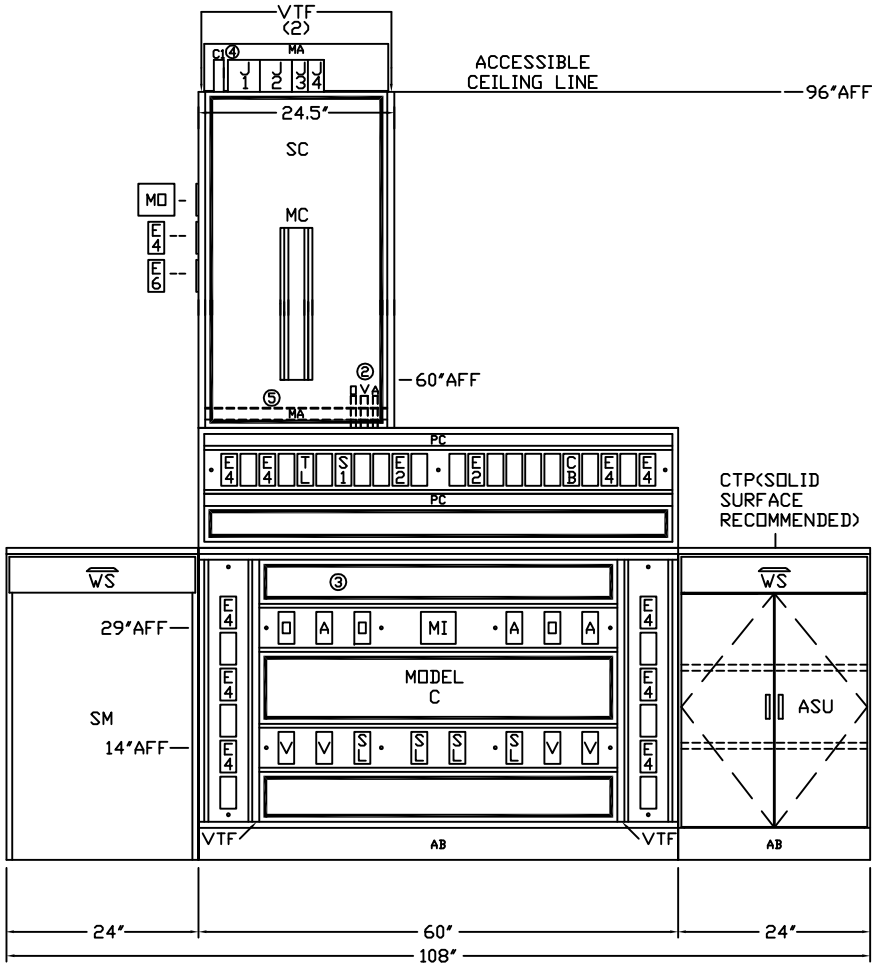
CONSOLES RECESSED 3" FROM FRONT OF UNIT

NOTES:

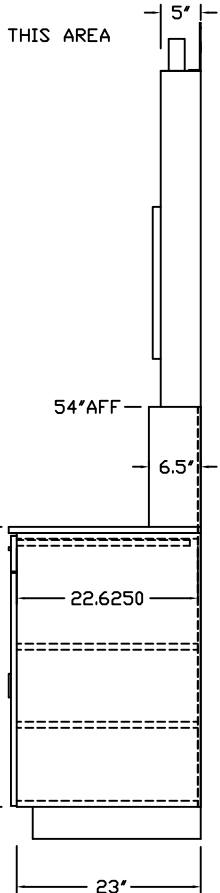
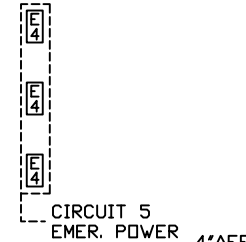
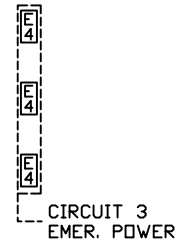
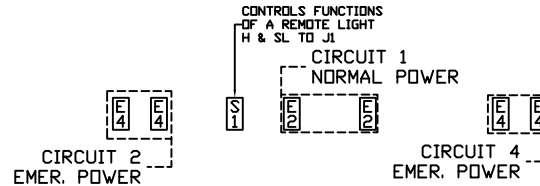
- ① JUNCTION BOXES: J1--NORMAL POWER, J2--EMERGENCY POWER, J3--CODE BLUE, J4--TELEPHONE.
- ② GAS PIPING: TYPE L COPPERTUBING. OXYGEN AND AIR--1/2" I.D., VACUUM--3/4" I.D.
- ③ PANEL LAMINATE COLOR: VERTICAL SURFACES TO BE DETERMINED. HORIZONTAL SURFACES TO BE DETERMINED.
- ④ CONDUIT: C1--MONITOR (1-1/4").
- ⑤ SERVICES FROM THE LOWER SECTION WILL BE TERMINATED IN THIS AREA AND WILL REQUIRE FIELD ROUTING DURING INSTALLATION.

120V, 20A NORMAL POWER ONE CIRCUIT 120V, 20A EMERGENCY POWER FIVE CIRCUITS

GROUND BUS — J1 J2 — GROUND BUS



HIGH ACUITY
-- REQ'D -- AS SHOWN
 -- OPPOSITE



WIRING DIAGRAM

GROUND WIRING TO BE #10 GREEN STRANDED COPPER.

