



MODULAR
SERVICES COMPANY

SELECTION GUIDE

ARTWORKS® ACCESSORIES

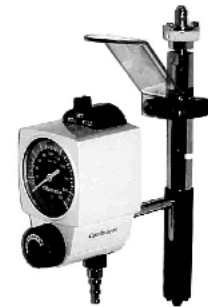


The following accessories are for use with ArtWorks® units. The vacuum regulators and flowmeters with swivel assemblies are for use with the recessed models only. Swivel assemblies included with these flowmeters and vacuum regulators allow the clinician to store the equipment conveniently in place behind the picture.

3-Mode Continuous Vacuum Regulator with Swivel Assembly

The 3-Mode Regulator comes complete with a swivel assembly, allowing the vacuum regulator to be stored in the recessed ArtWorks® — ready for immediate access by the clinician.

DESCRIPTION	ADAPTER	STOCK NO.
Vacuum Regulator, 3-Mode Continuous with Swivel Assembly and Tubing Nipple	Diamond Style	224-2900
	Geometric Style	224-2943
	Latch Key Style	224-2944



Intermittent Suction Unit Vacuum Regulator with Swivel Assembly

The Intermittent Vacuum Regulator comes complete with a swivel assembly, allowing the vacuum regulator to be stored in the recessed ArtWorks® — ready for immediate access by the clinician.

DESCRIPTION	ADAPTER	STOCK NO.
Vacuum Regulator, Intermittent Suction with Swivel Assembly and Tubing Nipple	Diamond Style	251-2901
	Geometric Style	251-2945
	Latch Key Style	251-2946



Vacuum Swivel Assembly Only

Vacuum Swivel Assembly includes guard and adapter ONLY. No regulators.

DESCRIPTION	ADAPTER	STOCK NO.
Vacuum Swivel Assembly and Guard	Diamond Style	522-2948
	Geometric Style	522-2950
	Latch Key Style	522-2949

Oxygen Flowmeter with Swivel Assembly

The 0–15 L/M Oxygen Flowmeter comes complete with swivel assembly, oxygen DISS fitting, oxygen color-coded tubing nipple, and oxygen DISS power outlet. The swivel assembly allows the flowmeter to be stored in the recessed ArtWorks® ready for immediate access by the clinician.

DESCRIPTION	ADAPTER	STOCK NO.
O15P Oxygen Flowmeter with Swivel Assembly, Oxygen DISS Fitting, Oxygen Tubing Nipple and Oxygen DISS Power Outlet	Diamond Style	524-3350
	Geometric Style	524-3351
	Latch Key Style	524-3352



❑ Oxygen Swivel Assembly Only

Oxygen Swivel Assembly includes guard and adapter ONLY. No flowmeters.

DESCRIPTION	ADAPTER	STOCK NO.
Oxygen Swivel Assembly and Guard	Diamond Style	524-3364
	Geometric Style	524-3366
	Latch Key Style	524-3365

❑ Air Flowmeter with Swivel Assembly

The 0–15 L/M Air Flowmeter comes complete with swivel assembly, DISS oxygen fitting, color-coded tubing nipple and air DISS power outlet. The swivel assembly allows the flowmeter to be stored in the recessed ArtWorks®- ready for immediate access by the clinician.

DESCRIPTION	ADAPTER	STOCK NO.
A15P Air Flowmeter with Swivel Assembly, Oxygen DISS Fitting, Oxygen Tubing Nipple and Air DISS Power Outlet	Diamond Style	526-3754
	Geometric Style	526-3755
	Latch Key Style	526-3756



❑ Air Swivel Assembly Only

Air Swivel Assembly includes guard and adapter ONLY. No flowmeters.

DESCRIPTION	ADAPTER	STOCK NO.
Air Swivel Assembly and Guard	Diamond Style	526-3763
	Geometric Style	526-3765
	Latch Key Style	526-3764

❑ Mercury Manometer

Baum #33 Mercury Manometer with angle lock and installation hardware for installing the manometer into the recessed ArtWorks®. The angle lock and installation hardware are also available separately.

DESCRIPTION	STOCK NO.
Baum #33 Mercury Manometer with Angle Lock and Installation Hardware	517-2214
Angle Lock and Installation Hardware ONLY	517-2215

❑ Aneroid Manometer

Tycos Aneroid Manometer with cuff storage and installation hardware for installing the manometer into the recessed ArtWorks®. The cuff storage and installation hardware are also available separately.

DESCRIPTION	STOCK NO.
Tycos Aneroid Manometer with Cuff Storage and Installation Hardware	517-2216
Cuff Storage and Installation Hardware ONLY	517-2217

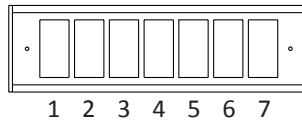
HOSPITAL NAME: _____

OPTIONAL LOWER ELECTRICAL CONSOLE

1. Order the console that matches the ArtWorks® model you have selected. The console is an optional accessory that is ordered separately and installed (by others) at the jobsite.
2. When configuring the console, please consider bed location in reference to the lower console, as this may affect the sequential order of the components that you require.
3. Configure the console using the components listed on the legend below. Fill in the component location with the appropriate component code.

3-Gas Flush-Mount (6813-F & 6823-F)

Qty (as shown) _____ (reverse seq.) _____

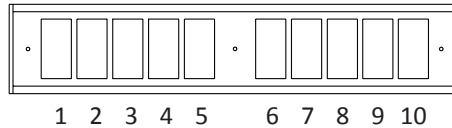


5-Gas Flush-Mount (6815-F & 6825-F)

Qty (as shown) _____ (reverse seq.) _____

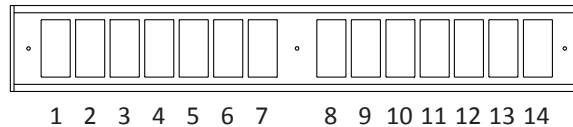
3-Gas Recessed-Mount (6813-R & 6823-R)

Qty (as shown) _____ (reverse seq.) _____



5-Gas Recessed-Mount (6815-R & 6825-R)

Qty (as shown) _____ (reverse seq.) _____

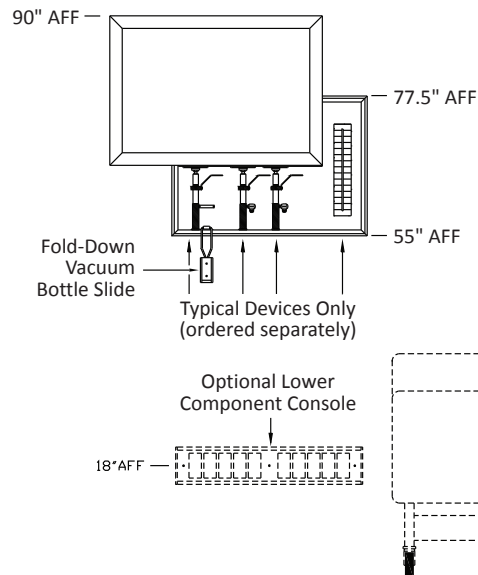


LEGEND FOR OPTIONAL LOWER CONSOLE ELECTRICAL COMPONENTS

Code	Description
E1	Single Electrical Receptacles, Ivory, Normal Power
E2	Duplex Electrical Receptacle, Ivory, Normal Power
E3	Single Electrical Receptacle, Red, Emergency Power
E4	Duplex Electrical Receptacle, Red, Emergency Power
E6	Ground Receptacle, Hampden SLR-3S
B	Blank
NL	Continuous Burn Night Light
TL	Telephone Outlet Provision
TO	Telephone Outlet Jack, RJ-11
MP*	Provision for #376 Side-Com
NP	Duplex Receptacle Provision, Normal Power
EP	Duplex Receptacle Provision, Emergency Power
P1	Single-Gang Compartment w/Blank Coverplate
P2**	Two-Gang Compartment w/Blank Coverplate

*MP Consider the bed location in reference to the lower console when arranging the order of components.

**P2 Requires two component locations side by side.



500 E. Britton Rd. • Oklahoma City, OK 73114
Tel: 800.687.0938 • Fax: 405.528.0368
www.modularservices.com
info@modularservices.com