

**NOTES:**

- ① GAS OUTLETS TO BE MSC STANDARD BRAND WITH CONNECTION TO MATCH EXISTING HOSPITAL EQUIPMENT.
- ② DEVICE MOUNTING PANELS: 3D LAMINATE SELECTION TO BE DETERMINED. WOOD GRAIN TO BE IN A VERTICAL ORIENTATION.
- ③ HORIZONTAL CHANNELS TO BE ANODIZED ALUMINUM AND DEVICE COVER PLATES TO BE STAINLESS STEEL.
- ④ FORM UNIT IS SEMI-RECESSED MOUNTED
- ⑤ OUTER SECTIONS AVAILABLE IN 18", 24", 32", OR 36" MODULE WIDTHS. ACTUAL PANEL WIDTH WILL BE THE MODULE WIDTH + 3/4"
- ⑥ CENTER SECTION AVAILABLE IN 36", 42", OR 48" WIDTH.



**MODULAR SERVICES COMPANY** 500 EAST BRITTON ROAD  
OKLAHOMA CITY, OK 73114

REVISED

**FORM®**  
SEMI-RECESSED SYSTEM  
7500 SERIES

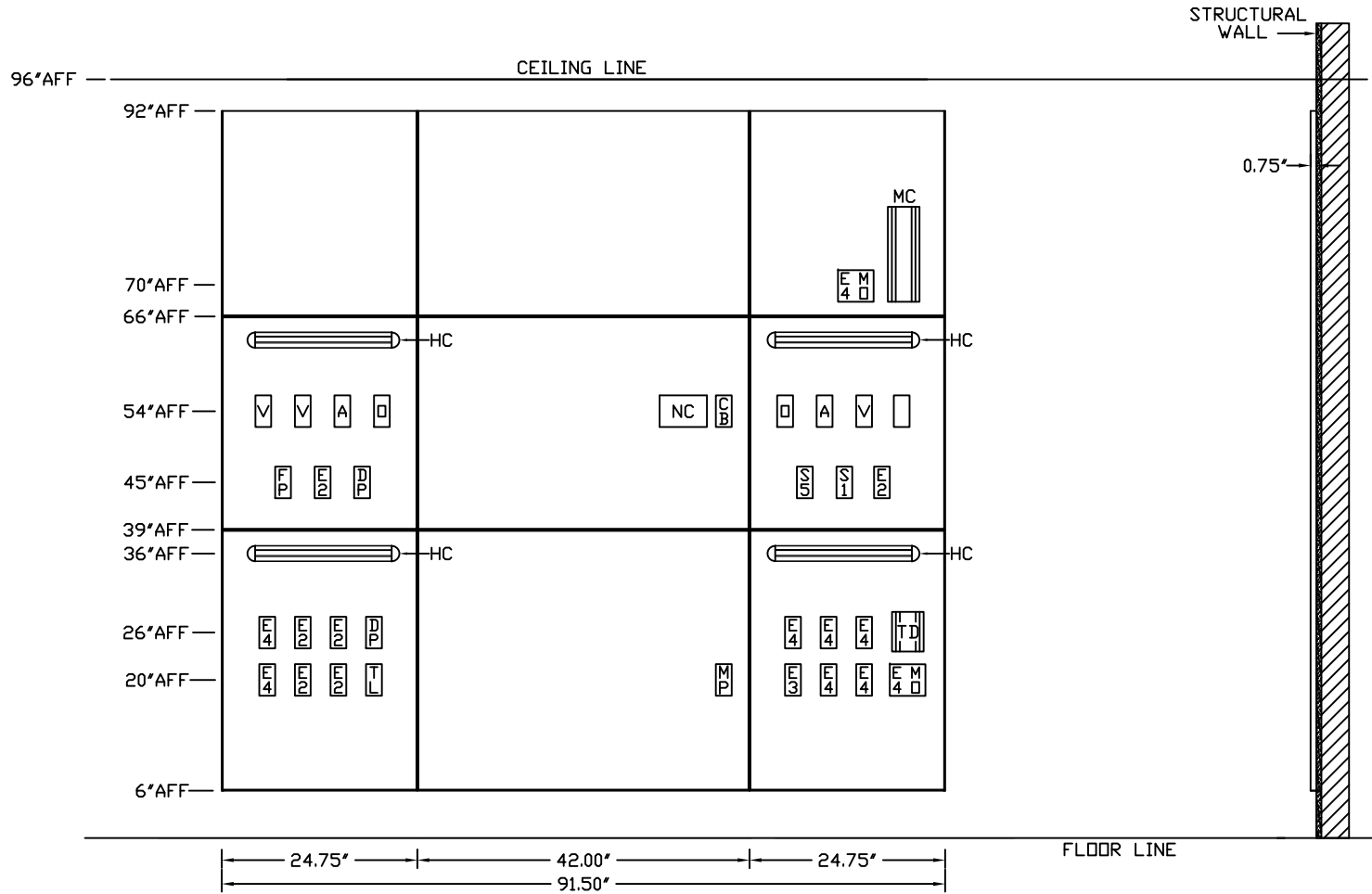
SCALE: = 1'

DATE \_\_\_\_\_ DRAWN BY \_\_\_\_\_ DRAWING #  
PB-200R

PROJECT

NOT FOR CONSTRUCTION  
CONCEPTUAL ONLY

LEGEND		
REQ	SYM	DESCRIPTION
2	□	OXYGEN OUTLET
2	A	AIR OUTLET
3	V	VACUUM OUTLET
6	E2	DUPLEX RECEPTACLE, 8300 IVORY, 20A, 125V, H.G., NORMAL POWER
1	E3	SINGLE RECEPTACLE, 8310 RED, 20A, 125V, H.G., EMER. POWER
9	E4	DUPLEX RECEPTACLE, 8300 RED, 20A, 125V, H.G., EMER. POWER
1	S1	LIGHT SWITCH, 1P, 15A, 125/277V, IVORY TOGGLE HANDLE
1	S5	MOMENTARY CONTACT SWITCH, 1P, 15A 120V, 3-POS, CENTER OFF, IVORY
1	NC	NURSE CALL PROVISION
1	CB	CODE BLUE PROVISION
2	DP	DATA OUTLET PROVISION SINGLE CAT 5, RJ-45 RECEPTACLE
1	TL	TELEPHONE OUTLET PROVISION SINGLE CAT 5, RJ-45 RECEPTACLE
1	MP	MULTI-PIN BED RECEPT. PROVISION
2	MD	MONITOR OUTPUT PROVISION
1	FP	FUTURE PROVISION
1	MC	MONITOR CHANNEL ONLY
1	TD	TOUCHDOWN CHARTING STATION
4	HC	HORIZONTAL ACCESSORY CHANNEL





**NOTES:**

- ① GAS OUTLETS TO BE MSC STANDARD BRAND WITH CONNECTION TO MATCH EXISTING HOSPITAL EQUIPMENT.
- ② DEVICE MOUNTING PANELS: 3D LAMINATE SELECTION TO BE DETERMINED. WOOD GRAIN TO BE IN A VERTICAL ORIENTATION.
- ③ HORIZONTAL CHANNELS TO BE ANODIZED ALUMINUM AND DEVICE COVER PLATES TO BE STAINLESS STEEL.
- ④ FORM UNIT IS SEMI-RECESSED MOUNTED
- ⑤ OUTER SECTIONS AVAILABLE IN 18", 24", 32", OR 36" MODULE WIDTHS. ACTUAL PANEL WIDTH WILL BE THE MODULE WIDTH + 3/4"
- ⑥ CENTER SECTION AVAILABLE IN 36", 42", OR 48" WIDTH.



**MODULAR SERVICES COMPANY** 500 EAST BRITTON ROAD  
OKLAHOMA CITY, OK 73114

REVISED

FORM®  
SEMI-RECESSED SYSTEM  
7500 SERIES

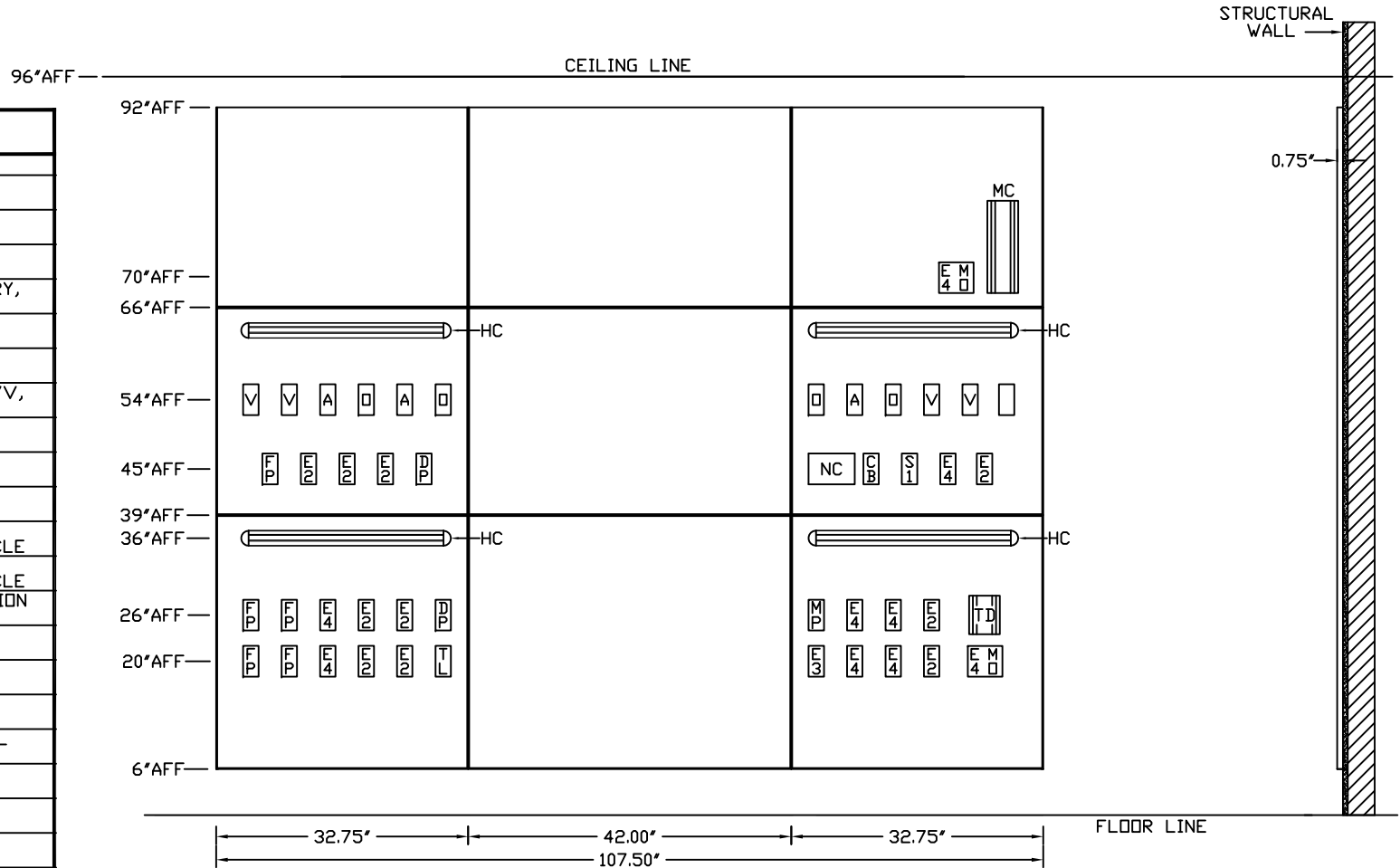
SCALE: =1'

DATE \_\_\_\_\_ DRAWN BY \_\_\_\_\_ DRAWING #  
PB-202R

PROJECT

NOT FOR CONSTRUCTION  
CONCEPTUAL ONLY

LEGEND		
REQ	SYM	DESCRIPTION
4	□	OXYGEN OUTLET
3	A	AIR OUTLET
4	V	VACUUM OUTLET
10	E2	DUPLEX RECEPTACLE, 8300 IVORY, 20A, 125V, H.G., NORMAL POWER
1	E3	SINGLE RECEPTACLE, 8310 RED, 20A, 125V, H.G., EMER. POWER
9	E4	DUPLEX RECEPTACLE, 8300 RED, 20A, 125V, H.G., EMER. POWER
1	S1	LIGHT SWITCH, 1P, 15A, 125/277V, IVORY TOGGLE HANDLE
5	FP	FUTURE PROVISION
1	NC	NURSE CALL PROVISION
1	CB	CODE BLUE PROVISION
2	DP	DATA OUTLET PROVISION SINGLE CAT 5, RJ-45 RECEPTACLE
1	TL	TELEPHONE OUTLET PROVISION SINGLE CAT 5, RJ-45 RECEPTACLE
1	MP	MULTI-PIN BED RECEPT. PROVISION
2	MO	MONITOR OUTPUT PROVISION
1	MC	MONITOR CHANNEL ONLY
1	TD	TOUCHDOWN CHARTING STATION
4	HC	HORIZONTAL ACCESSORY CHANNEL



**NOTES:**

- ① GAS OUTLETS TO BE MSC STANDARD BRAND WITH CONNECTION TO MATCH EXISTING HOSPITAL EQUIPMENT.
- ② DEVICE MOUNTING PANELS: 3D LAMINATE SELECTION TO BE DETERMINED. WOOD GRAIN TO BE IN A VERTICAL ORIENTATION.
- ③ HORIZONTAL CHANNELS TO BE ANODIZED ALUMINUM AND DEVICE COVER PLATES TO BE STAINLESS STEEL.
- ④ FORM UNIT IS SEMI-RECESSED MOUNTED
- ⑤ OUTER SECTIONS AVAILABLE IN 18", 24", 32", OR 36" MODULE WIDTHS. ACTUAL PANEL WIDTH WILL BE THE MODULE WIDTH + 3/4"
- ⑥ CENTER SECTION AVAILABLE IN 36", 42", OR 48" WIDTH.



**MODULAR SERVICES COMPANY** 500 EAST BRITTON ROAD  
OKLAHOMA CITY, OK 73114

REVISED

**FORM®**  
SEMI-RECESSED SYSTEM  
7500 SERIES

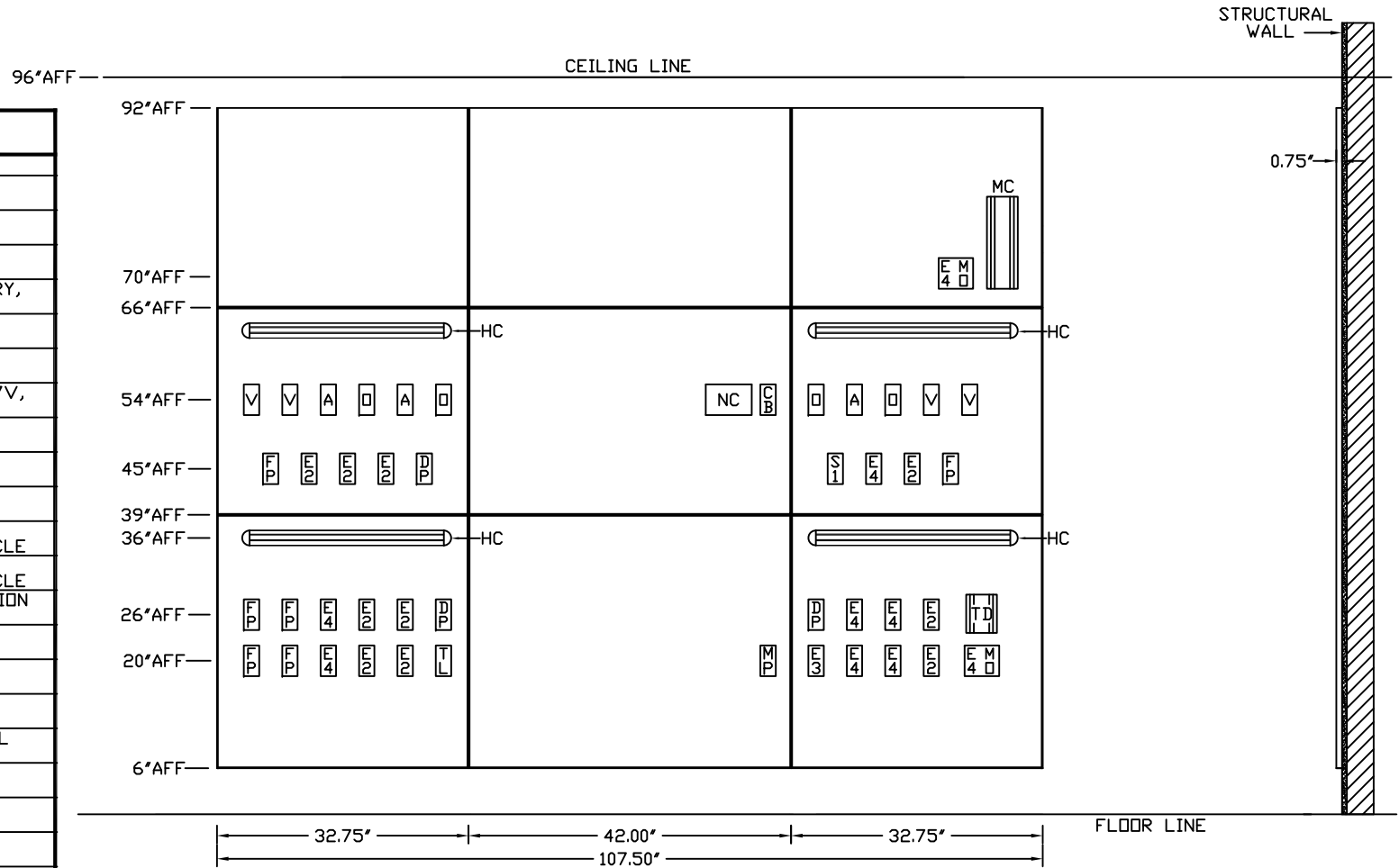
SCALE: = 1'

DATE: \_\_\_\_\_ DRAWN BY: \_\_\_\_\_ DRAWING #  
PB-203R

PROJECT

NOT FOR CONSTRUCTION  
CONCEPTUAL ONLY

LEGEND		
REQ	SYM	DESCRIPTION
4	□	OXYGEN OUTLET
3	A	AIR OUTLET
4	V	VACUUM OUTLET
10	E2	DUPLEX RECEPTACLE, 8300 IVORY, 20A, 125V, H.G., NORMAL POWER
1	E3	SINGLE RECEPTACLE, 8310 RED, 20A, 125V, H.G., EMER. POWER
9	E4	DUPLEX RECEPTACLE, 8300 RED, 20A, 125V, H.G., EMER. POWER
1	S1	LIGHT SWITCH, IP, 15A, 125/277V, IVORY TOGGLE HANDLE
6	FP	FUTURE PROVISION
1	NC	NURSE CALL PROVISION
1	CB	CODE BLUE PROVISION
3	DP	DATA OUTLET PROVISION SINGLE CAT 5, RJ-45 RECEPTACLE
1	TL	TELEPHONE OUTLET PROVISION SINGLE CAT 5, RJ-45 RECEPTACLE
1	MP	MULTI-PIN BED RECEPT. PROVISION
2	MD	MONITOR OUTPUT PROVISION
1	MC	MONITOR CHANNEL ONLY
1	TD	TOUCHDOWN CHARTING STATION
4	HC	HORIZONTAL ACCESSORY CHANNEL



**NOTES:**

- ① GAS OUTLETS TO BE MSC STANDARD BRAND WITH CONNECTION TO MATCH EXISTING HOSPITAL EQUIPMENT.
- ② DEVICE MOUNTING PANELS: 3D LAMINATE SELECTION TO BE DETERMINED. WOOD GRAIN TO BE IN A VERTICAL ORIENTATION.
- ③ HORIZONTAL CHANNELS TO BE ANODIZED ALUMINUM AND DEVICE COVER PLATES TO BE STAINLESS STEEL.
- ④ FORM UNIT IS SEMI-RECESSED MOUNTED
- ⑤ OUTER SECTIONS AVAILABLE IN 18", 24", 32", OR 36" MODULE WIDTHS. ACTUAL PANEL WIDTH WILL BE THE MODULE WIDTH + 3/4"
- ⑥ CENTER SECTION AVAILABLE IN 36", 42", OR 48" WIDTH.



**MODULAR** 500 EAST BRITTON ROAD  
**SERVICES COMPANY** OKLAHOMA CITY, OK 73114

REVISED

FORM®  
 SEMI-RECESSED SYSTEM  
 7500 SERIES

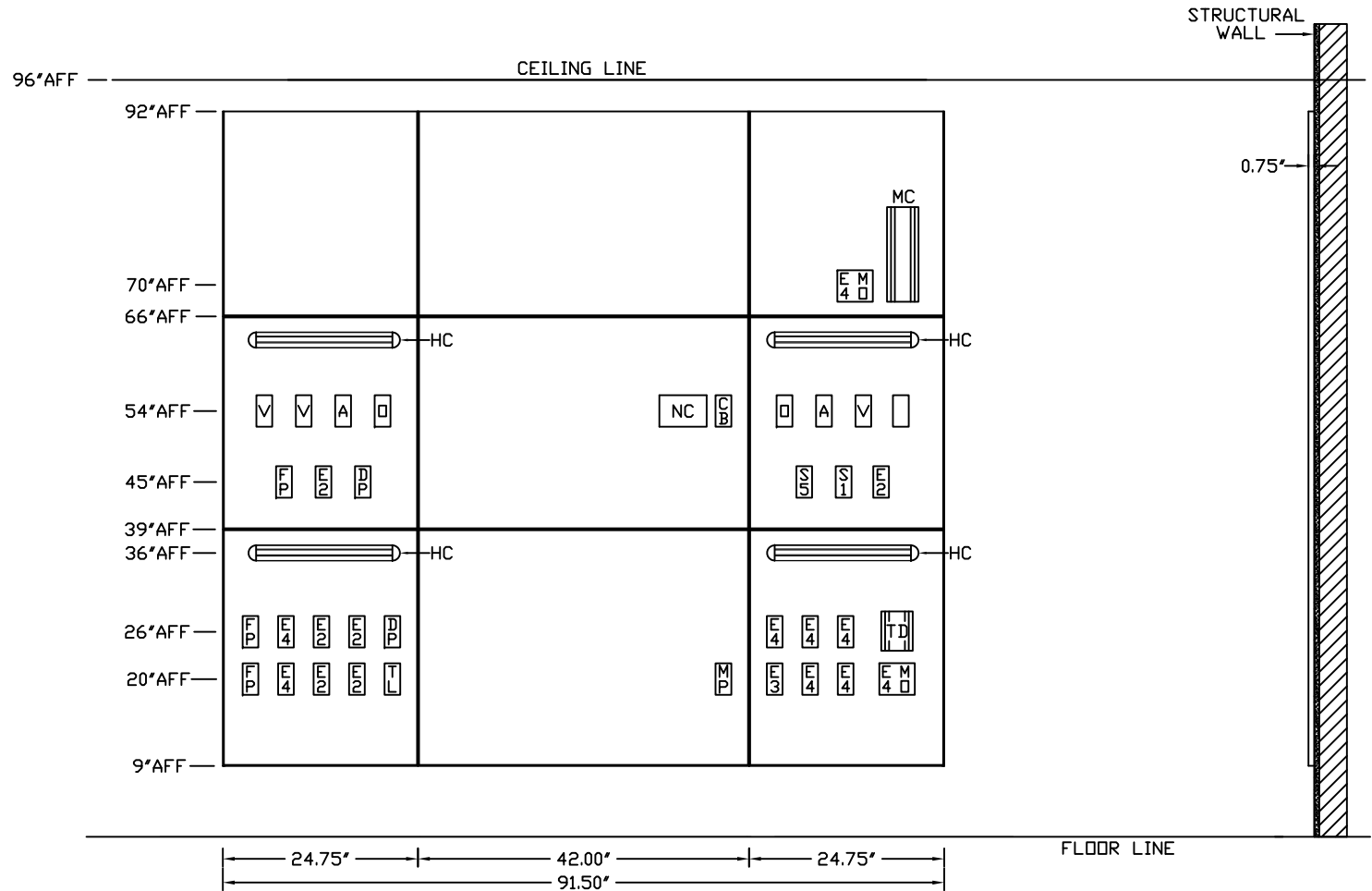
SCALE: = 1'

DATE \_\_\_\_\_ DRAWN BY \_\_\_\_\_ DRAWING #  
 PB-204R

PROJECT

NOT FOR CONSTRUCTION  
 CONCEPTUAL ONLY

LEGEND		
REQ	SYM	DESCRIPTION
2	□	OXYGEN OUTLET
2	A	AIR OUTLET
3	V	VACUUM OUTLET
6	E2	DUPLEX RECEPTACLE, 8300 IVORY, 20A, 125V, H.G., NORMAL POWER
1	E3	SINGLE RECEPTACLE, 8310 RED, 20A, 125V, H.G., EMER. POWER
9	E4	DUPLEX RECEPTACLE, 8300 RED, 20A, 125V, H.G., EMER. POWER
1	S1	LIGHT SWITCH, 1P, 15A, 125/277V, IVORY TOGGLE HANDLE
1	S5	MOMENTARY CONTACT SWITCH, 1P, 15A 120V, 3-POS, CENTER OFF, IVORY
1	NC	NURSE CALL PROVISION
1	CB	CODE BLUE PROVISION
2	DP	DATA OUTLET PROVISION SINGLE CAT 5, RJ-45 RECEPTACLE
1	TL	TELEPHONE OUTLET PROVISION SINGLE CAT 5, RJ-45 RECEPTACLE
1	MP	MULTI-PIN BED RECEPT. PROVISION
2	MD	MONITOR OUTPUT PROVISION
3	FP	FUTURE PROVISION
1	MC	MONITOR CHANNEL ONLY
1	TD	TOUCHDOWN CHARTING STATION
4	HC	HORIZONTAL ACCESSORY CHANNEL





**NOTES:**

- ① GAS OUTLETS TO BE MSC STANDARD BRAND WITH CONNECTION TO MATCH EXISTING HOSPITAL EQUIPMENT.
- ② DEVICE MOUNTING PANELS: 3D LAMINATE SELECTION TO BE DETERMINED. WOOD GRAIN TO BE IN A VERTICAL ORIENTATION.
- ③ HORIZONTAL CHANNELS TO BE ANODIZED ALUMINUM AND DEVICE COVER PLATES TO BE STAINLESS STEEL.
- ④ FORM UNIT IS SEMI-RECESSED MOUNTED
- ⑤ OUTER SECTIONS AVAILABLE IN 18", 24", 32", OR 36" MODULE WIDTHS. ACTUAL PANEL WIDTH WILL BE THE MODULE WIDTH + 3/4"
- ⑥ CENTER SECTION AVAILABLE IN 36", 42", OR 48" WIDTH.



**MODULAR** 500 EAST BRITTON ROAD  
**SERVICES COMPANY** OKLAHOMA CITY, OK 73114

REVISED

FORM®  
 SEMI-RECESSED SYSTEM  
 7500 SERIES

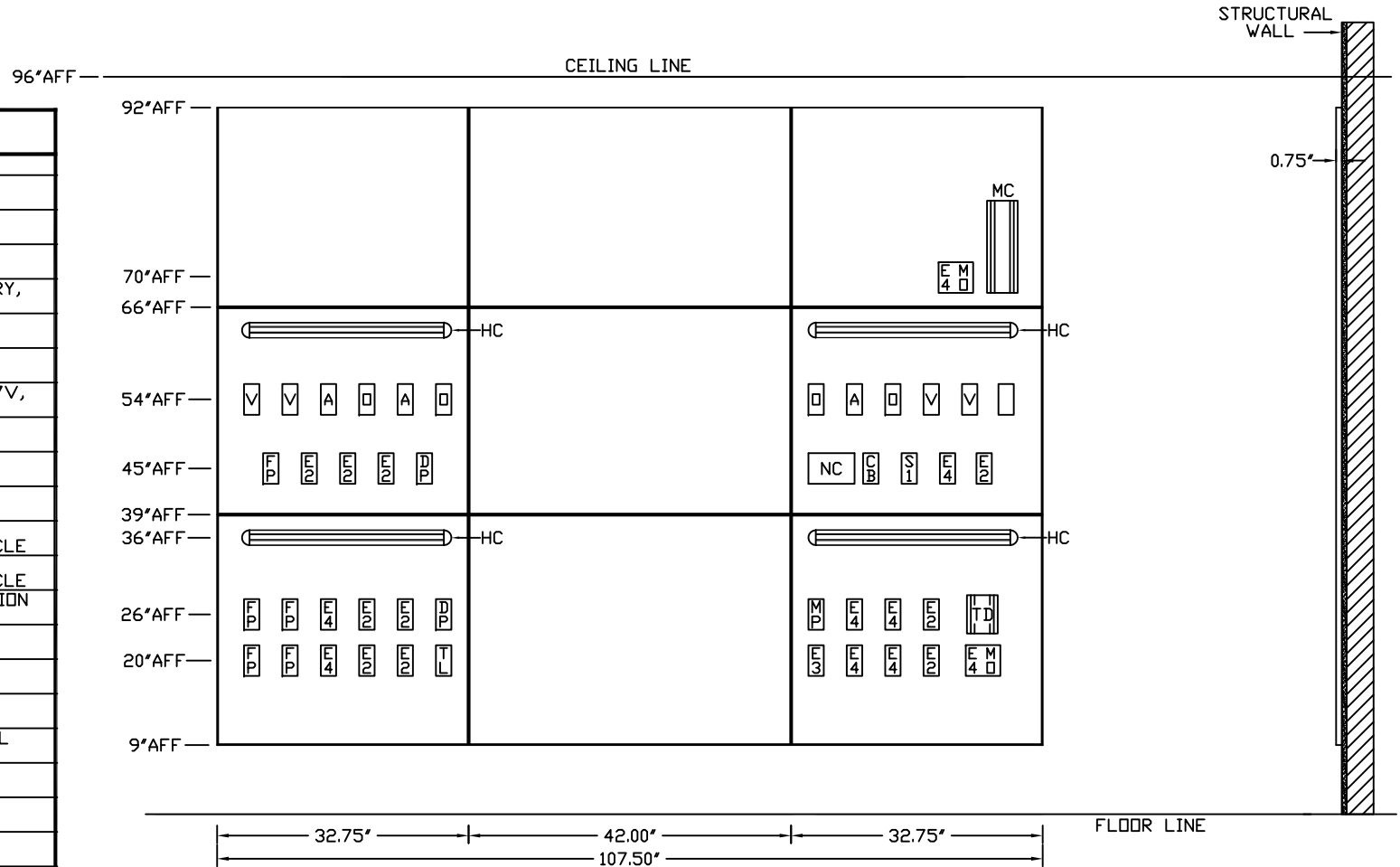
SCALE: = 1'

DATE \_\_\_\_\_ DRAWN BY \_\_\_\_\_ DRAWING # PB-206R

PROJECT

NOT FOR CONSTRUCTION  
 CONCEPTUAL ONLY

LEGEND		
REQ	SYM	DESCRIPTION
4	□	OXYGEN OUTLET
3	A	AIR OUTLET
4	V	VACUUM OUTLET
10	E2	DUPLEX RECEPTACLE, 8300 IVORY, 20A, 125V, H.G., NORMAL POWER
1	E3	SINGLE RECEPTACLE, 8310 RED, 20A, 125V, H.G., EMER. POWER
9	E4	DUPLEX RECEPTACLE, 8300 RED, 20A, 125V, H.G., EMER. POWER
1	S1	LIGHT SWITCH, 1P, 15A, 125/277V, IVORY TOGGLE HANDLE
5	FP	FUTURE PROVISION
1	NC	NURSE CALL PROVISION
1	CB	CODE BLUE PROVISION
2	DP	DATA OUTLET PROVISION SINGLE CAT 5, RJ-45 RECEPTACLE
1	TL	TELEPHONE OUTLET PROVISION SINGLE CAT 5, RJ-45 RECEPTACLE
1	MP	MULTI-PIN BED RECEPT. PROVISION
2	MO	MONITOR OUTPUT PROVISION
1	MC	MONITOR CHANNEL ONLY
1	TD	TOUCHDOWN CHARTING STATION
4	HC	HORIZONTAL ACCESSORY CHANNEL



**NOTES:**

- ① GAS OUTLETS TO BE MSC STANDARD BRAND WITH CONNECTION TO MATCH EXISTING HOSPITAL EQUIPMENT.
- ② DEVICE MOUNTING PANELS: 3D LAMINATE SELECTION TO BE DETERMINED. WOOD GRAIN TO BE IN A VERTICAL ORIENTATION.
- ③ HORIZONTAL CHANNELS TO BE ANODIZED ALUMINUM AND DEVICE COVER PLATES TO BE STAINLESS STEEL.
- ④ FORM UNIT IS SEMI-RECESSED MOUNTED
- ⑤ OUTER SECTIONS AVAILABLE IN 18", 24", 32", OR 36" MODULE WIDTHS. ACTUAL PANEL WIDTH WILL BE THE MODULE WIDTH + 3/4"
- ⑥ CENTER SECTION AVAILABLE IN 36", 42", OR 48" WIDTH.



**MODULAR** 500 EAST BRITTON ROAD  
**SERVICES COMPANY** OKLAHOMA CITY, OK 73114

REVISED

FORM®  
 SEMI-RECESSED SYSTEM  
 7500 SERIES

SCALE: = 1'

DATE: \_\_\_\_\_ DRAWN BY: \_\_\_\_\_ DRAWING #  
 PB-207R

PROJECT

NOT FOR CONSTRUCTION  
 CONCEPTUAL ONLY

LEGEND		
REQ	SYM	DESCRIPTION
4	□	OXYGEN OUTLET
3	A	AIR OUTLET
4	V	VACUUM OUTLET
10	E2	DUPLEX RECEPTACLE, 8300 IVORY, 20A, 125V, H.G., NORMAL POWER
1	E3	SINGLE RECEPTACLE, 8310 RED, 20A, 125V, H.G., EMER. POWER
9	E4	DUPLEX RECEPTACLE, 8300 RED, 20A, 125V, H.G., EMER. POWER
1	S1	LIGHT SWITCH, IP, 15A, 125/277V, IVORY TOGGLE HANDLE
6	FP	FUTURE PROVISION
1	NC	NURSE CALL PROVISION
1	CB	CODE BLUE PROVISION
3	DP	DATA OUTLET PROVISION SINGLE CAT 5, RJ-45 RECEPTACLE
1	TL	TELEPHONE OUTLET PROVISION SINGLE CAT 5, RJ-45 RECEPTACLE
1	MP	MULTI-PIN BED RECEPT. PROVISION
2	MO	MONITOR OUTPUT PROVISION
1	MC	MONITOR CHANNEL ONLY
1	TD	TOUCHDOWN CHARTING STATION
4	HC	HORIZONTAL ACCESSORY CHANNEL

