

NOTES:

- ① GAS OUTLETS TO BE MSC STANDARD BRAND WITH CONNECTION TO MATCH EXISTING HOSPITAL EQUIPMENT.
- ② DEVICE MOUNTING PANELS; 3D LAMINATE SELECTION TO BE DETERMINED. WOOD GRAIN TO BE IN A VERTICAL ORIENTATION.
- ③ HORIZONTAL CHANNELS TO BE ANODIZED ALUMINUM AND DEVICE COVER PLATES TO BE STAINLESS STEEL.
- ④ FORM UNIT IS SURFACE MOUNTED
- ⑤ INSET SURFACE PROVIDED FOR BASE MATERIAL (BY OTHERS)
- ⑥ OUTER SECTIONS AVAILABLE IN 18", 24", 32", OR 36" MODULE WIDTHS. ACTUAL PANEL WIDTH WILL BE THE MODULE WIDTH + 1 1/2"
- ⑦ CENTER SECTION AVAILABLE IN 36", 42", OR 48" WIDTH.



MODULAR SERVICES COMPANY 500 EAST BRITTON ROAD
OKLAHOMA CITY, OK 73114

REVISED

FORM #
LOW/MEDIUM ACUITY
7500 SERIES
FLOOR MOUNT SYSTEM
SCALE: = 1'
DATE: DRAWN BY: DRAWING #
PB-200

PROJECT

NOT FOR CONSTRUCTION
CONCEPTUAL ONLY

-- REQ'D: -- AS SHOWN
-- OPPOSITE

STRUCTURAL
WALL

102" AFF

4.50'

LEGEND

REQ	SYM	DESCRIPTION
2	D	OXYGEN OUTLET
2	A	AIR OUTLET
3	V	VACUUM OUTLET
6	E2	DUPLEX RECEPTACLE, 8300 IVDRY, 20A, 125V, H.G., NORMAL POWER
1	E3	SINGLE RECEPTACLE, 8310 RED, 20A, 125V, H.G., EMER. POWER
9	E4	DUPLEX RECEPTACLE, 8300 RED, 20A, 125V, H.G., EMER. POWER
1	S1	LIGHT SWITCH, 1P, 15A, 125/277V, IVDRY TOGGLE HANDLE
1	S5	MOMENTARY CONTACT SWITCH, 1P, 15A 120V, 3-POS, CENTER OFF, IVDRY
1	NC	NURSE CALL PROVISION
1	CB	CODE BLUE PROVISION
2	DP	DATA OUTLET PROVISION SINGLE CAT 5, RJ-45 RECEPTACLE
1	TL	TELEPHONE OUTLET PROVISION SINGLE CAT 5, RJ-45 RECEPTACLE
1	MP	MULTI-PIN BED RECEPT. PROVISION
2	MO	MONITOR OUTPUT PROVISION
4	FP	FUTURE PROVISION
1	MC	MONITOR CHANNEL ONLY
1	TD	TOUCHDOWN CHARTING STATION
4	HC	HORIZONTAL ACCESSORY CHANNEL



NOTES:

- ① GAS OUTLETS TO BE MSC STANDARD BRAND WITH CONNECTION TO MATCH EXISTING HOSPITAL EQUIPMENT.
- ② DEVICE MOUNTING PANELS; 3D LAMINATE SELECTION TO BE DETERMINED. WOOD GRAIN TO BE IN A VERTICAL ORIENTATION.
- ③ HORIZONTAL CHANNELS TO BE ANODIZED ALUMINUM AND DEVICE COVER PLATES TO BE STAINLESS STEEL.
- ④ FORM UNIT IS SURFACE MOUNTED
- ⑤ INSET SURFACE PROVIDED FOR BASE MATERIAL (BY OTHERS)
- ⑥ OUTER SECTIONS AVAILABLE IN 18", 24", 32", OR 36" MODULE WIDTHS. ACTUAL PANEL WIDTH WILL BE THE MODULE WIDTH + 1 1/2"
- ⑦ CENTER SECTION AVAILABLE IN 36", 42", OR 48" WIDTH.



MODULAR SERVICES COMPANY 500 EAST BRITTON ROAD
OKLAHOMA CITY, OK 73114

REVISED

FORM #

LOW/MEDIUM ANGLE
7500 SERIES
FLOOR MOUNT SYSTEM

SCALE: =1'

DATE: _____ DRAWN BY: _____ DRAWING #
PB-201

PROJECT

NOT FOR CONSTRUCTION
CONCEPTUAL ONLY

-- REQ'D: -- AS SHOWN
-- OPPOSITE

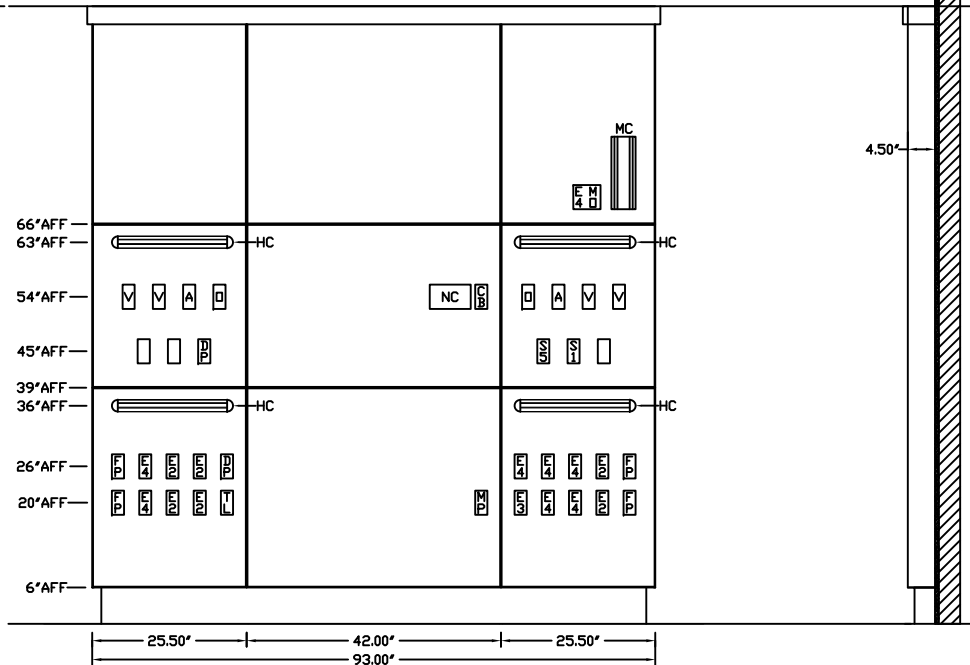
STRUCTURAL
WALL

102" AFF

4.50'

LEGEND

REQ	SYM	DESCRIPTION
2	D	OXYGEN OUTLET
2	A	AIR OUTLET
4	V	VACUUM OUTLET
6	E2	DUPLEX RECEPTACLE, 8300 IVDRY, 20A, 125V, H.G., NORMAL POWER
1	E3	SINGLE RECEPTACLE, 8310 RED, 20A, 125V, H.G., EMER. POWER
8	E4	DUPLEX RECEPTACLE, 8300 RED, 20A, 125V, H.G., EMER. POWER
1	S1	LIGHT SWITCH, 1P, 15A, 125/277V, IVORY TOGGLE HANDLE
1	S5	MOMENTARY CONTACT SWITCH, 1P, 15A 120V, 3-POS, CENTER OFF, IVORY
1	NC	NURSE CALL PROVISION
1	CB	CODE BLUE PROVISION
2	DP	DATA OUTLET PROVISION SINGLE CAT 5, RJ-45 RECEPTACLE
1	TL	TELEPHONE OUTLET PROVISION SINGLE CAT 5, RJ-45 RECEPTACLE
1	MP	MULTI-PIN BED RECEPT. PROVISION
1	MO	MONITOR OUTPUT PROVISION
4	FP	FUTURE PROVISION
1	MC	MONITOR CHANNEL ONLY
4	HC	HORIZONTAL ACCESSORY CHANNEL



NOTES:

- ① GAS OUTLETS TO BE MSC STANDARD BRAND WITH CONNECTION TO MATCH EXISTING HOSPITAL EQUIPMENT.
- ② DEVICE MOUNTING PANELS; 3D LAMINATE SELECTION TO BE DETERMINED. WOOD GRAIN TO BE IN A VERTICAL ORIENTATION.
- ③ HORIZONTAL CHANNELS TO BE ANODIZED ALUMINUM AND DEVICE COVER PLATES TO BE STAINLESS STEEL.
- ④ FORM UNIT IS SURFACE MOUNTED
- ⑤ INSET SURFACE PROVIDED FOR BASE MATERIAL (BY OTHERS)
- ⑥ OUTER SECTIONS AVAILABLE IN 18", 24", 32", OR 36" MODULE WIDTHS. ACTUAL PANEL WIDTH WILL BE THE MODULE WIDTH + 1 1/2"
- ⑦ CENTER SECTION AVAILABLE IN 36", 42", OR 48" WIDTH.



MODULAR SERVICES COMPANY 500 EAST BRITTON ROAD
OKLAHOMA CITY, OK 73114

REVISED

FORM®
HIGH ACUITY
7500 SERIES
FLOOR MOUNT SYSTEM

SCALE: 1/8" = 1'

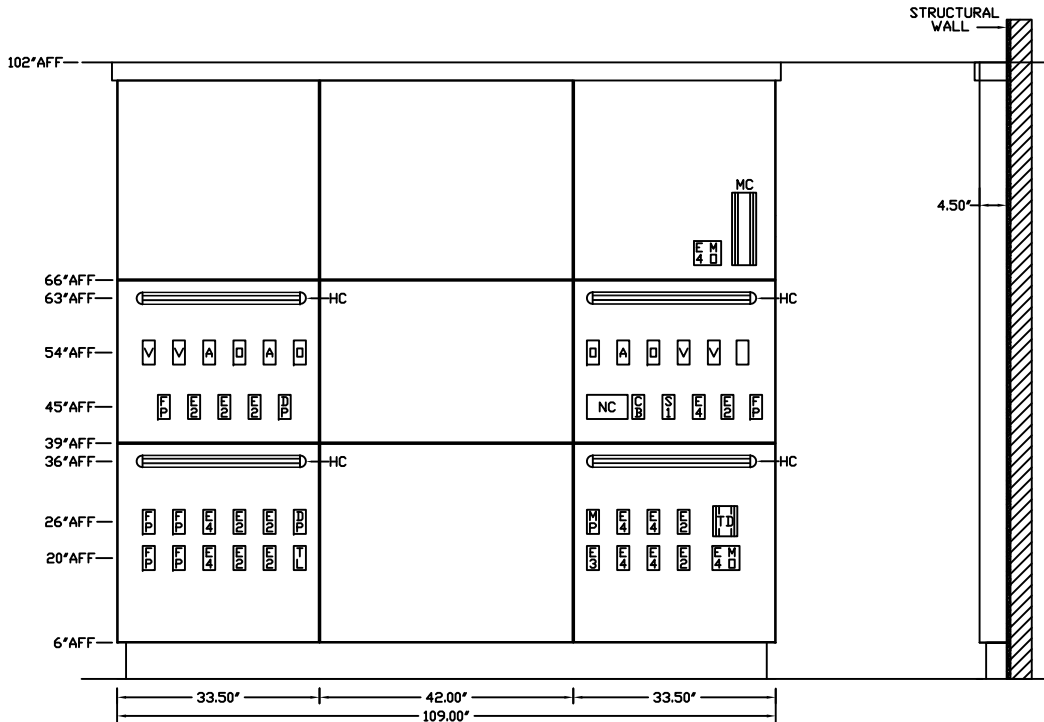
DATE: _____ DRAWN BY: _____ DRAWING #: PB-202

PROJECT

NOT FOR CONSTRUCTION
CONCEPTUAL ONLY

-- REQ'D: -- AS SHOWN
-- OPPOSITE

LEGEND		
REQ	SYM	DESCRIPTION
4	D	OXYGEN OUTLET
3	A	AIR OUTLET
4	V	VACUUM OUTLET
10	E2	DUPLEX RECEPTACLE, 8300 IVORY, 20A, 125V, H.G., NORMAL POWER
1	E3	SINGLE RECEPTACLE, 8310 RED, 20A, 125V, H.G., EMER. POWER
9	E4	DUPLEX RECEPTACLE, 8300 RED, 20A, 125V, H.G., EMER. POWER
1	S1	LIGHT SWITCH, 1P, 15A, 125/277V, IVORY TOGGLE HANDLE
6	FP	FUTURE PROVISION
1	NC	NURSE CALL PROVISION
1	CB	CODE BLUE PROVISION
2	DP	DATA OUTLET PROVISION
1	TL	TELEPHONE OUTLET PROVISION
1	MP	MULTI-PIN BED RECEPT. PROVISION
2	MO	MONITOR OUTPUT PROVISION
1	MC	MONITOR CHANNEL ONLY
1	TD	TOUCHDOWN CHARTING STATION
4	HC	HORIZONTAL ACCESSORY CHANNEL



NOTES:

- ① GAS OUTLETS TO BE MSC STANDARD BRAND WITH CONNECTION TO MATCH EXISTING HOSPITAL EQUIPMENT.
- ② DEVICE MOUNTING PANELS; 3D LAMINATE SELECTION TO BE DETERMINED. WOOD GRAIN TO BE IN A VERTICAL ORIENTATION.
- ③ HORIZONTAL CHANNELS TO BE ANODIZED ALUMINUM AND DEVICE COVER PLATES TO BE STAINLESS STEEL.
- ④ FORM UNIT IS SURFACE MOUNTED
- ⑤ INSET SURFACE PROVIDED FOR BASE MATERIAL (BY OTHERS)
- ⑥ OUTER SECTIONS AVAILABLE IN 18", 24", 32", OR 36" MODULE WIDTHS. ACTUAL PANEL WIDTH WILL BE THE MODULE WIDTH + 1 1/2"
- ⑦ CENTER SECTION AVAILABLE IN 36", 42", OR 48" WIDTH.



MODULAR SERVICES COMPANY 500 EAST BRITTON ROAD
OKLAHOMA CITY, OK 73114

REVISED

FORM®

HIGH ACUITY
7500 SERIES
FLOOR MOUNT SYSTEM

SCALE: 1/4" = 1'

DATE: _____ DRAWN BY: _____ DRAWING #: PB-203

PROJECT

NOT FOR CONSTRUCTION
CONCEPTUAL ONLY

-- REQ'D: -- AS SHOWN
-- OPPOSITE

STRUCTURAL
WALL

102" AFF

66" AFF

63" AFF

54" AFF

45" AFF

39" AFF

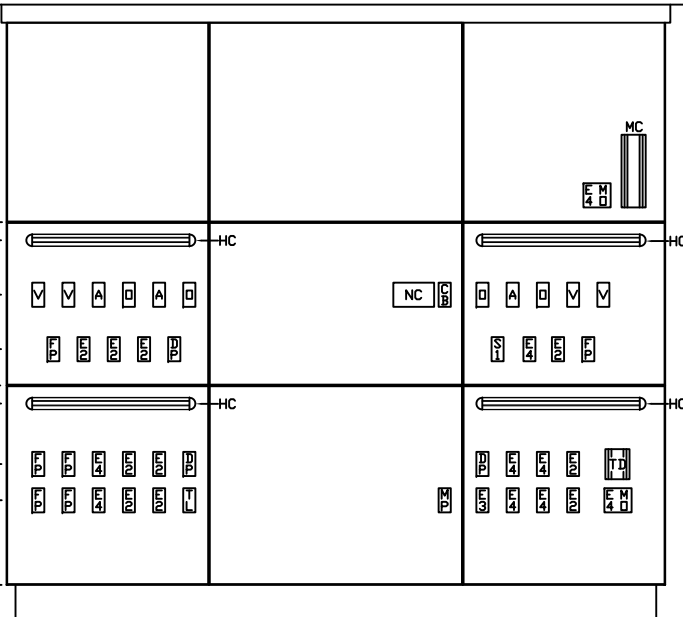
36" AFF

26" AFF

20" AFF

6" AFF

4.50'



33.50' | 42.00' | 33.50' |
109.00'

LEGEND

REQ	SYM	DESCRIPTION
4	D	OXYGEN OUTLET
3	A	AIR OUTLET
4	V	VACUUM OUTLET
10	E2	DUPLEX RECEPTACLE, 8300 IVORY, 20A, 125V, H.G., NORMAL POWER
1	E3	SINGLE RECEPTACLE, 8310 RED, 20A, 125V, H.G., EMER. POWER
9	E4	DUPLEX RECEPTACLE, 8300 RED, 20A, 125V, H.G., EMER. POWER
1	S1	LIGHT SWITCH, 1P, 15A, 125/277V, IVORY TOGGLE HANDLE
6	FP	FUTURE PROVISION
1	NC	NURSE CALL PROVISION
1	CB	CODE BLUE PROVISION
3	DP	DATA OUTLET PROVISION SINGLE CAT 5, RJ-45 RECEPTACLE
1	TL	TELEPHONE OUTLET PROVISION SINGLE CAT 5, RJ-45 RECEPTACLE
1	MP	MULTI-PIN BED RECEPT. PROVISION
2	MO	MONITOR OUTPUT PROVISION
1	MC	MONITOR CHANNEL ONLY
1	TD	TOUCHDOWN CHARTING STATION
4	HC	HORIZONTAL ACCESSORY CHANNEL

NOTES:

- ① GAS OUTLETS TO BE MSC STANDARD BRAND WITH CONNECTION TO MATCH EXISTING HOSPITAL EQUIPMENT.
- ② DEVICE MOUNTING PANELS; 3D LAMINATE SELECTION TO BE DETERMINED. WOOD GRAIN TO BE IN A VERTICAL ORIENTATION.
- ③ HORIZONTAL CHANNELS TO BE ANODIZED ALUMINUM AND DEVICE COVER PLATES TO BE STAINLESS STEEL.
- ④ FORM UNIT IS SURFACE MOUNTED
- ⑤ OUTER SECTIONS AVAILABLE IN 18", 24", 32", OR 36" MODULE WIDTHS. ACTUAL PANEL WIDTH WILL BE THE MODULE WIDTH + 1 1/2"
- ⑥ CENTER SECTION AVAILABLE IN 36", 42", OR 48" WIDTH.



MODULAR SERVICES COMPANY 500 EAST BRITTON ROAD
OKLAHOMA CITY, OK 73114

REVISED

FORM

LOW/MEDIUM ACUITY
7500 SERIES
WALL MOUNT SYSTEM

SCALE: = 1'

DATE: _____ DRAWN BY: _____ DRAWING #: PB-204

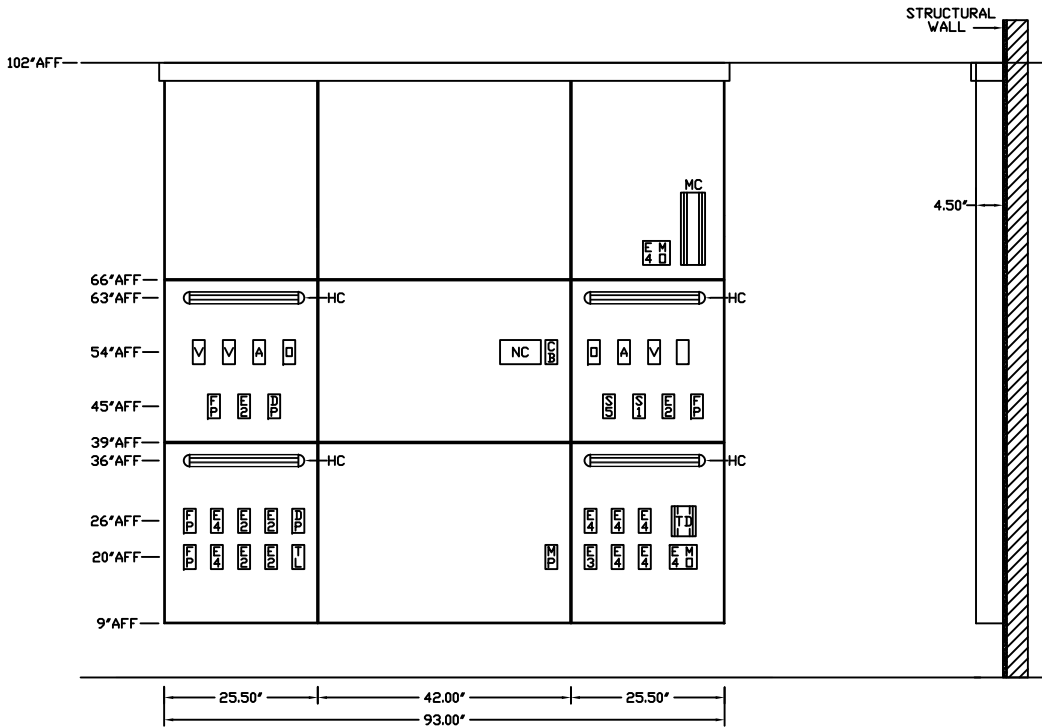
PROJECT

NOT FOR CONSTRUCTION
CONCEPTUAL ONLY

-- REQ'D: -- AS SHOWN
-- OPPOSITE

LEGEND

REQ	SYM	DESCRIPTION
2	D	OXYGEN OUTLET
2	A	AIR OUTLET
3	V	VACUUM OUTLET
6	E2	DUPLEX RECEPTACLE, 8300 IVORY, 20A, 125V, H.G., NORMAL POWER
1	E3	SINGLE RECEPTACLE, 8310 RED, 20A, 125V, H.G., EMER. POWER
9	E4	DUPLEX RECEPTACLE, 8300 RED, 20A, 125V, H.G., EMER. POWER
1	S1	LIGHT SWITCH, 1P, 15A, 125/277V, IVORY TOGGLE HANDLE
1	S5	MOMENTARY CONTACT SWITCH, 1P, 15A 120V, 3-POS, CENTER OFF, IVORY
1	NC	NURSE CALL PROVISION
1	CB	CODE BLUE PROVISION
2	DP	DATA OUTLET PROVISION SINGLE CAT 5, RJ-45 RECEPTACLE
1	TL	TELEPHONE OUTLET PROVISION SINGLE CAT 5, RJ-45 RECEPTACLE
1	MP	MULTI-PIN BED RECEPT. PROVISION
2	MO	MONITOR OUTPUT PROVISION
4	FP	FUTURE PROVISION
1	MC	MONITOR CHANNEL ONLY
1	TD	TOUCHDOWN CHARTING STATION
4	HC	HORIZONTAL ACCESSORY CHANNEL



NOTES:

- ① GAS OUTLETS TO BE MSC STANDARD BRAND WITH CONNECTION TO MATCH EXISTING HOSPITAL EQUIPMENT.
- ② DEVICE MOUNTING PANELS; 3D LAMINATE SELECTION TO BE DETERMINED. WOOD GRAIN TO BE IN A VERTICAL ORIENTATION.
- ③ HORIZONTAL CHANNELS TO BE ANODIZED ALUMINUM AND DEVICE COVER PLATES TO BE STAINLESS STEEL.
- ④ FORM UNIT IS SURFACE MOUNTED
- ⑤ OUTER SECTIONS AVAILABLE IN 18", 24", 32", OR 36" MODULE WIDTHS. ACTUAL PANEL WIDTH WILL BE THE MODULE WIDTH + 1 1/2"
- ⑥ CENTER SECTION AVAILABLE IN 36", 42", OR 48" WIDTH.



MODULAR SERVICES COMPANY 500 EAST BRITTON ROAD
OKLAHOMA CITY, OK 73114

REVISED

FORM #

LOW/MEDIUM ACUITY
7500 SERIES
WALL MOUNT SYSTEM

SCALE: = 1'

DATE: _____ DRAWN BY: _____ DRAWING #
PB-205

PROJECT

NOT FOR CONSTRUCTION
CONCEPTUAL ONLY

-- REQ'D: -- AS SHOWN
-- OPPOSITE

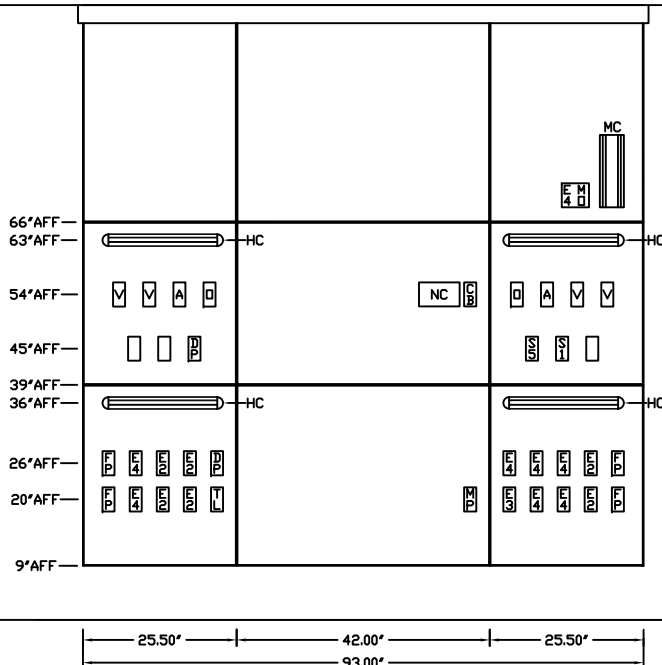
STRUCTURAL
WALL

102" AFF

4.50'

LEGEND

REQ	SYM	DESCRIPTION
2	D	OXYGEN OUTLET
2	A	AIR OUTLET
4	V	VACUUM OUTLET
6	E2	DUPLEX RECEPTACLE, 8300 IVORY, 20A, 125V, H.G., NORMAL POWER
1	E3	SINGLE RECEPTACLE, 8310 RED, 20A, 125V, H.G., EMER. POWER
8	E4	DUPLEX RECEPTACLE, 8300 RED, 20A, 125V, H.G., EMER. POWER
1	S1	LIGHT SWITCH, 1P, 15A, 125/277V, IVORY TOGGLE HANDLE
1	S5	MOMENTARY CONTACT SWITCH, 1P, 15A 120V, 3-POS, CENTER OFF, IVORY
1	NC	NURSE CALL PROVISION
1	CB	CODE BLUE PROVISION
2	DP	DATA OUTLET PROVISION SINGLE CAT 5, RJ-45 RECEPTACLE
1	TL	TELEPHONE OUTLET PROVISION SINGLE CAT 5, RJ-45 RECEPTACLE
1	MP	MULTI-PIN BED RECEPT. PROVISION
1	MO	MONITOR OUTPUT PROVISION
4	FP	FUTURE PROVISION
1	MC	MONITOR CHANNEL ONLY
4	HC	HORIZONTAL ACCESSORY CHANNEL



25.50'

42.00'

25.50'

93.00'



NOTES:

- ① GAS OUTLETS TO BE MSC STANDARD BRAND WITH CONNECTION TO MATCH EXISTING HOSPITAL EQUIPMENT.
- ② DEVICE MOUNTING PANELS; 3D LAMINATE SELECTION TO BE DETERMINED. WOOD GRAIN TO BE IN A VERTICAL ORIENTATION.
- ③ HORIZONTAL CHANNELS TO BE ANODIZED ALUMINUM AND DEVICE COVER PLATES TO BE STAINLESS STEEL.
- ④ FORM UNIT IS SURFACE MOUNTED
- ⑤ OUTER SECTIONS AVAILABLE IN 18", 24", 32", OR 36" MODULE WIDTHS. ACTUAL PANEL WIDTH WILL BE THE MODULE WIDTH + 1 1/2"
- ⑥ CENTER SECTION AVAILABLE IN 36", 42", OR 48" WIDTH.



MODULAR SERVICES COMPANY 500 EAST BRITTON ROAD
OKLAHOMA CITY, OK 73114

REVISED

FORM# HIGH ACUITY
7500 SERIES
WALL MOUNT SYSTEM

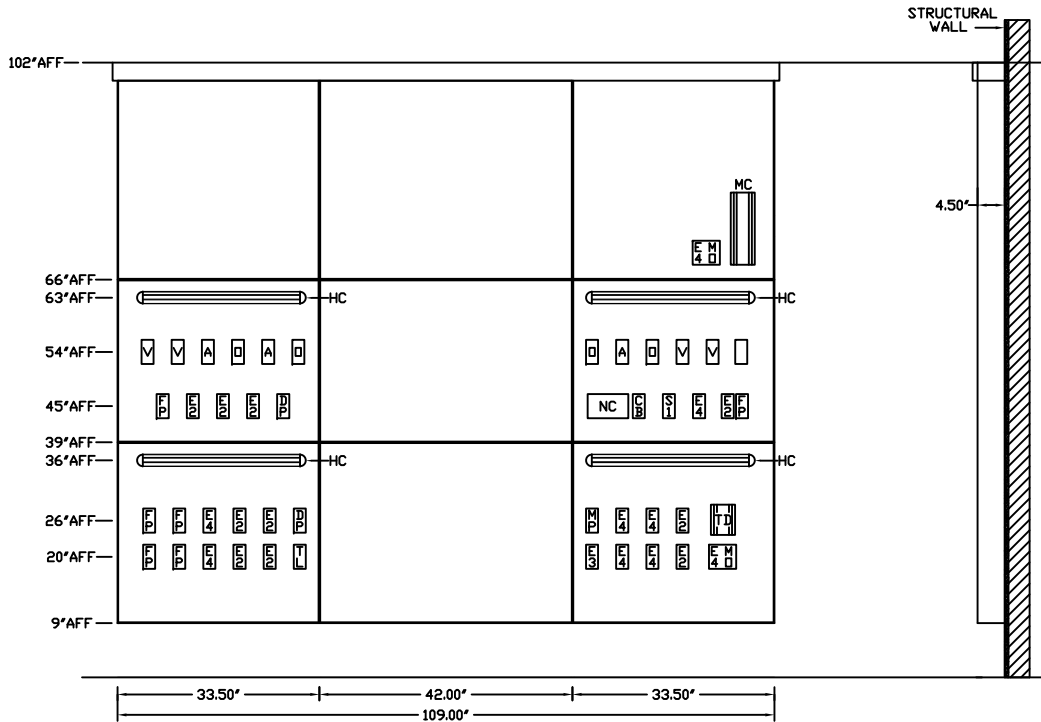
SCALE: = 1'

DATE: _____ DRAWN BY: _____ DRAWING #
PB-206

NOT FOR CONSTRUCTION
CONCEPTUAL ONLY

-- REQ'D: -- AS SHOWN
-- OPPOSITE

LEGEND		
REQ	SYM	DESCRIPTION
4	□	OXYGEN OUTLET
3	A	AIR OUTLET
4	∇	VACUUM OUTLET
10	E2	DUPLEX RECEPTACLE, 8300 IVORY, 20A, 125V, H.G. NORMAL POWER
1	E3	SINGLE RECEPTACLE, 8310 RED, 30A, 125V, H.G. EMER. POWER
9	E4	DUPLEX RECEPTACLE, 8300 RED, 20A, 125V, H.G. EMER. POWER
1	S1	LIGHT SWITCH, 1P, 15A, 125/277V, IVORY TOGGLE HANDLE
6	FP	FUTURE PROVISION
1	NC	NURSE CALL PROVISION
1	CB	CODE BLUE PROVISION
2	DP	DATA OUTLET PROVISION SINGLE CAT 5, RJ-45 RECEPTACLE
1	TL	TELEPHONE OUTLET PROVISION SINGLE CAT 5, RJ-45 RECEPTACLE
1	MP	MULTI-PIN BED RECEPT. PROVISION
2	MO	MONITOR OUTPUT PROVISION
1	MC	MONITOR CHANNEL ONLY
1	TD	TOUCHDOWN CHARTING STATION
4	HC	HORIZONTAL ACCESSORY CHANNEL



NOTES:

- ① GAS OUTLETS TO BE MSC STANDARD BRAND WITH CONNECTION TO MATCH EXISTING HOSPITAL EQUIPMENT.
- ② DEVICE MOUNTING PANELS; 3D LAMINATE SELECTION TO BE DETERMINED. WOOD GRAIN TO BE IN A VERTICAL ORIENTATION.
- ③ HORIZONTAL CHANNELS TO BE ANODIZED ALUMINUM AND DEVICE COVER PLATES TO BE STAINLESS STEEL.
- ④ FORM UNIT IS SURFACE MOUNTED
- ⑤ OUTER SECTIONS AVAILABLE IN 18", 24", 32", OR 36" MODULE WIDTHS. ACTUAL PANEL WIDTH WILL BE THE MODULE WIDTH + 1 1/2"
- ⑥ CENTER SECTION AVAILABLE IN 36", 42", OR 48" WIDTH.



MODULAR 500 EAST BRITTON ROAD
SERVICES COMPANY OKLAHOMA CITY, OK 73114

REVISED

FORM®
HIGH ACUITY
7500 SERIES
WALL MOUNT SYSTEM

SCALE: = 1'

DATE: _____ DRAWN BY: _____ DRAWING #
PB-207

PROJECT

NOT FOR CONSTRUCTION
CONCEPTUAL ONLY

-- REQ'D: -- AS SHOWN
-- OPPOSITE

LEGEND

REQ	SYM	DESCRIPTION
4	□	OXYGEN OUTLET
3	A	AIR OUTLET
4	V	VACUUM OUTLET
10	E2	DUPLEX RECEPTACLE 8300 IVORY, 20A, 125V, H.G., NORMAL POWER
1	E3	SINGLE RECEPTACLE 8310 RED, 20A, 125V, H.G., EMER. POWER
9	E4	DUPLEX RECEPTACLE 8300 RED, 20A, 125V, H.G., EMER. POWER
1	S1	LIGHT SWITCH, 1P, 15A, 125/277V, IVORY TOGGLE HANDLE
6	FP	FUTURE PROVISION
1	NC	NURSE CALL PROVISION
1	CB	CODE BLUE PROVISION
3	DP	DATA OUTLET PROVISION SINGLE CAT 5, RJ-45 RECEPTACLE
1	TL	TELEPHONE OUTLET PROVISION SINGLE CAT 5, RJ-45 RECEPTACLE
1	MP	MULTI-PIN BED RECEPT. PROVISION
2	MO	MONITOR OUTPUT PROVISION
1	MC	MONITOR CHANNEL ONLY
1	TD	TOUCHDOWN CHARTING STATION
4	HC	HORIZONTAL ACCESSORY CHANNEL

